

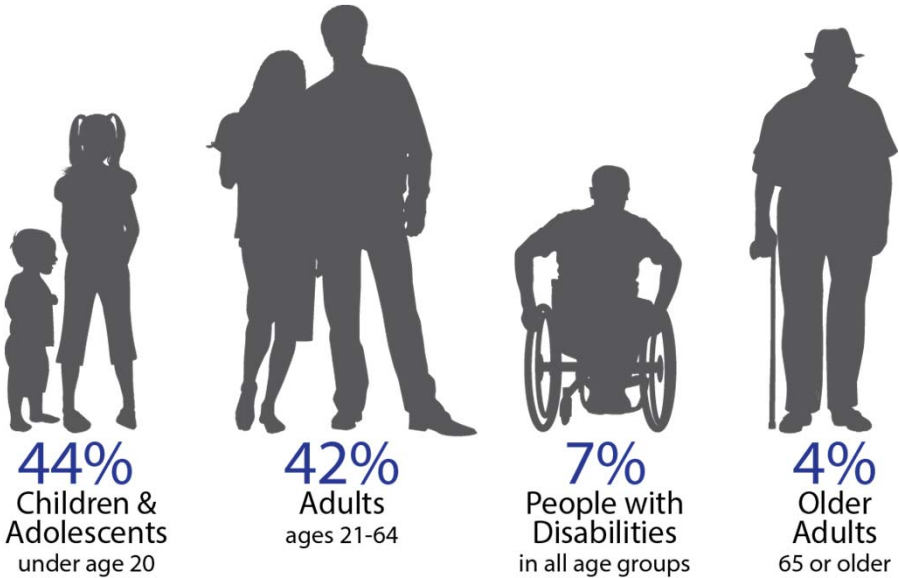
Colorado Medicaid: Innovation and Impact

Gretchen M. Hammer
Medicaid Director



COLORADO
Department of Health Care
Policy & Financing

Medicaid Population



FY 2014-15 Medicaid Caseload

Approximately 74% of adults on Medicaid are working



Federal Poverty Levels by Family Size		
	Family of 1	Family of 4
133%	\$15,654	\$32,252
260% (CHP+)	NA	\$60,625

*Some earning more may still qualify.



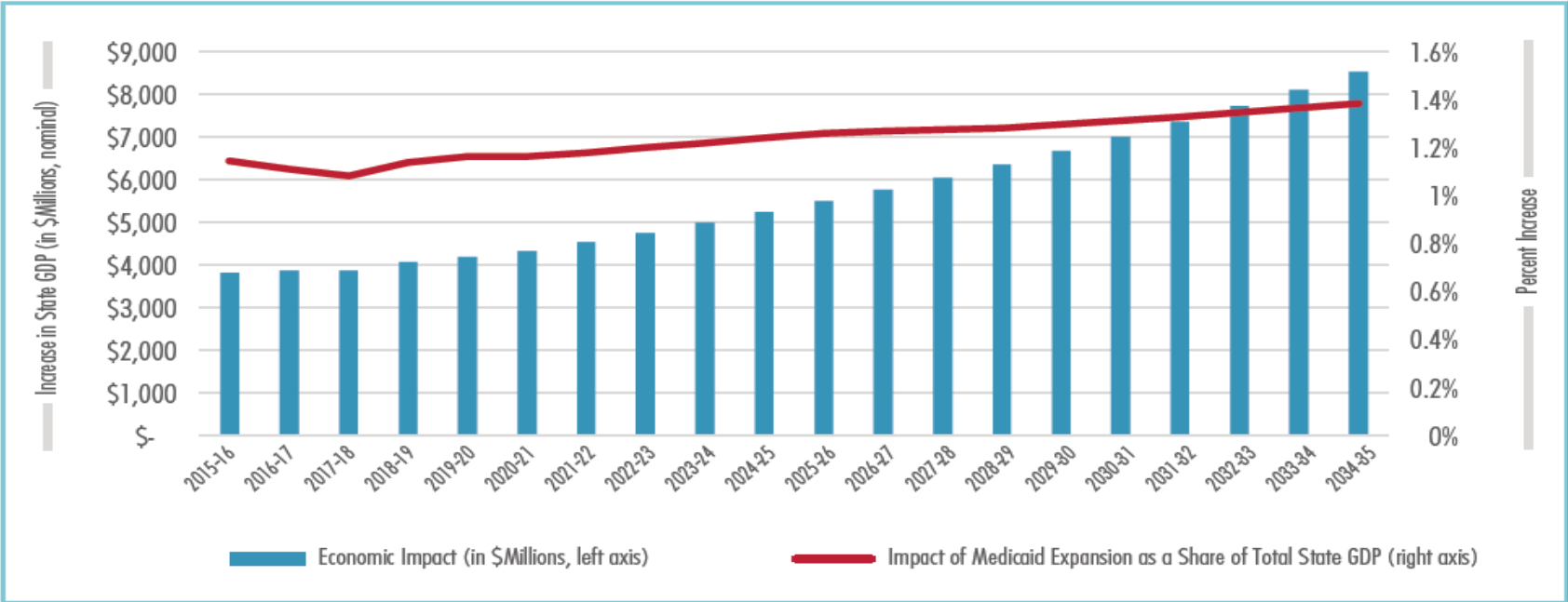
COLORADO
Department of Health Care
Policy & Financing

Economic Impact

FINDING 1:

Currently, Colorado’s economy, as measured by state gross domestic product (GDP), is \$3.82 billion (1.14 percent) larger as a result of Medicaid expansion. By FY 2034-35, the economy will be \$8.53 billion (1.38 percent) larger. Because of the increased economic activity created by spending on Medicaid, the economy will be larger in each year up to FY 2034-35 as well.

Total and Percent Increase in Economic Output (State GDP) as a Result of Medicaid Expansion



Source: Assessing the Economic and Budgetary Impact of Medicaid Expansion in Colorado: FY 2015-16 through FY 2034-35, prepared by Colorado Futures Center at Colorado State University for the Colorado Health Foundation.



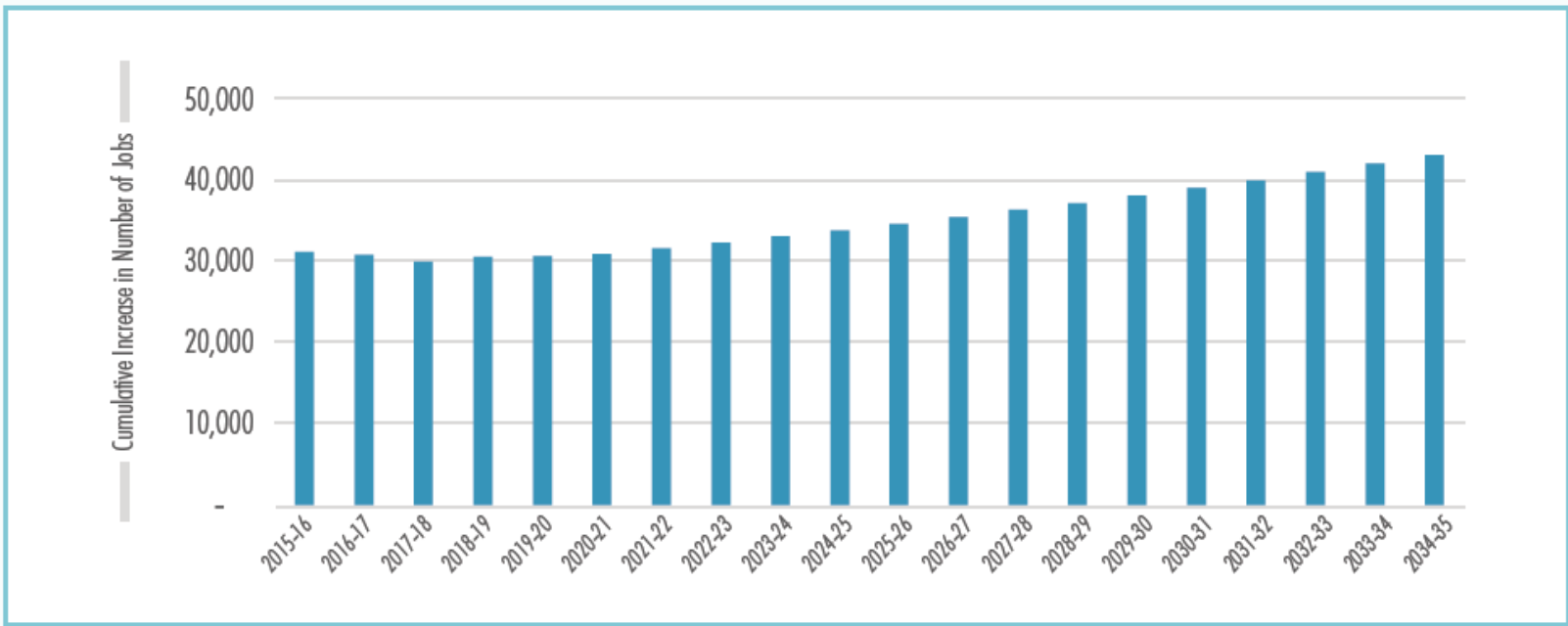
COLORADO
Department of Health Care
Policy & Financing

Economic Impact

FINDING 2:

Currently, Colorado’s economy supports 31,074 additional jobs due to Medicaid expansion. By FY 2034-35, that number will grow to 43,018, resulting in total employment that is 1.35 percent larger than it would be without Medicaid expansion.

Cumulative Increase in Employment as a Result of Medicaid Expansion



Source: Assessing the Economic and Budgetary Impact of Medicaid Expansion in Colorado: FY 2015-16 through FY 2034-35, prepared by Colorado Futures Center at Colorado State University for the Colorado Health Foundation.



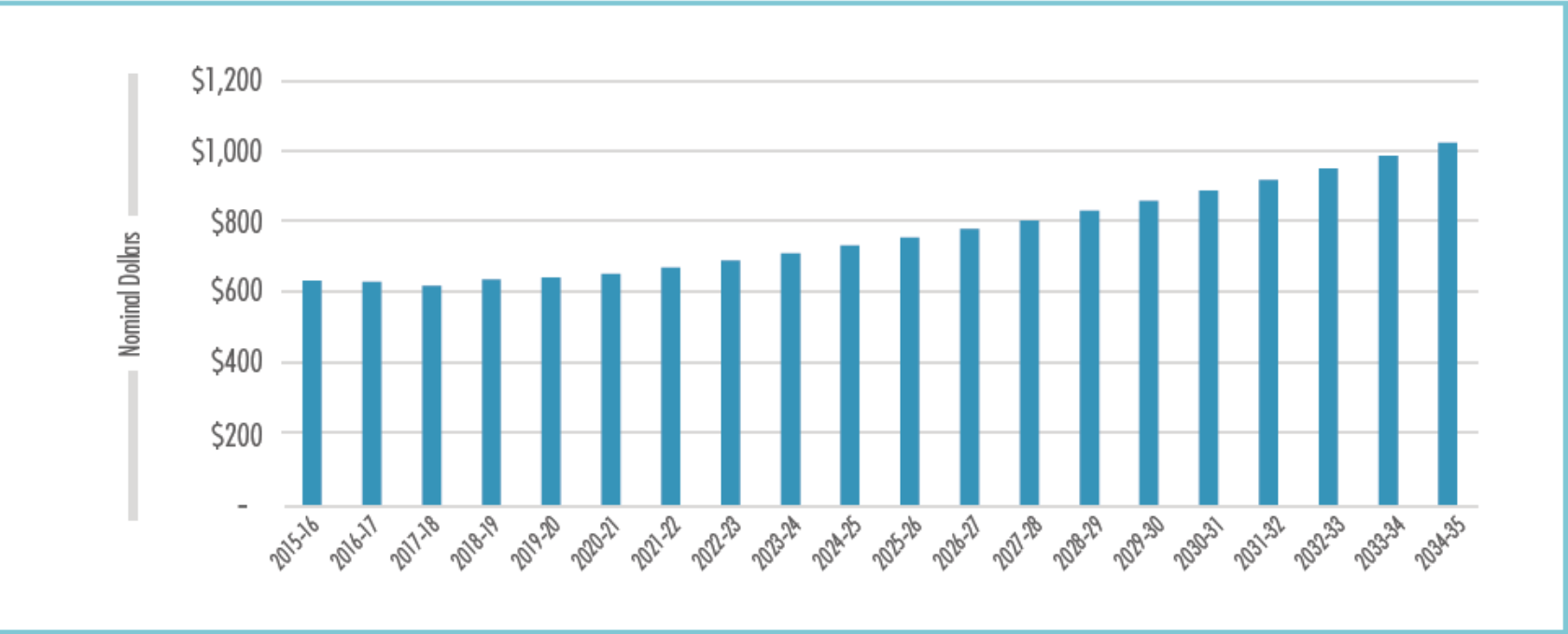
COLORADO
Department of Health Care
Policy & Financing

Economic Impact

FINDING 3:

Average household earnings in Colorado are currently \$643 higher due to the stimulative effect of the Medicaid expansion. By FY 2034-35, Coloradans' annual average household earnings will be \$1,033 higher.

Increase in Average Annual Household Earnings as a Result of Medicaid Expansion



Source: Assessing the Economic and Budgetary Impact of Medicaid Expansion in Colorado: FY 2015-16 through FY 2034-35, prepared by Colorado Futures Center at Colorado State University for the Colorado Health Foundation.



COLORADO
Department of Health Care
Policy & Financing

Community Impact

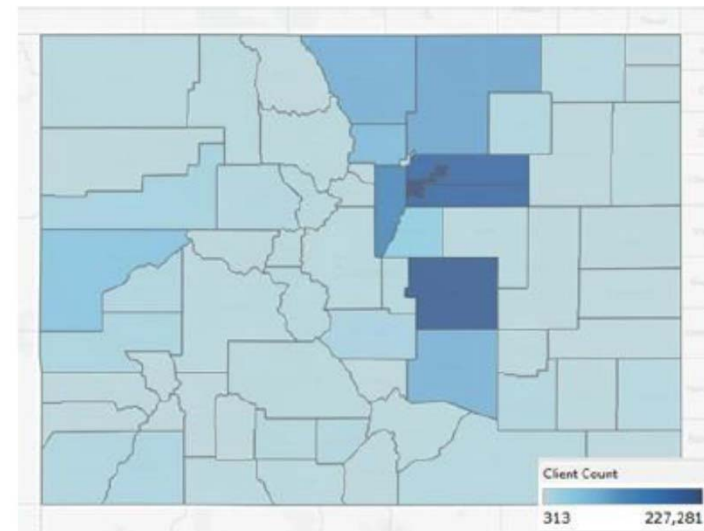


Figure 4 - Total Medicaid population density map.



COLORADO
Department of Health Care
Policy & Financing

Individual Impact



More than 73% of those eligible received physicals

Nearly doubled flu shots



More than 7,000 additional screenings for diabetes

Utilization information from claims data comparing 2013 and 2014

Long Term Services & Supports



Nearly 74% of clients live in place in the community

Comparison of FY 2014-15 waiver enrollments & clients receiving facility-based care

Accountable Care Collaborative



Well-child visits are more than double for children in the ACC for 7-10 months, as compared to those enrolled for 6 months or less.

ACC Annual Report, FY 2014-15



COLORADO
Department of Health Care
Policy & Financing

Thank you

Gretchen M. Hammer
Health First Colorado, Colorado's Medicaid Program
gretchen.hammer@state.co.us



COLORADO

Department of Health Care
Policy & Financing