

THE  
**PEW**  
CHARITABLE TRUSTS

## Medicaid Enrollment of Inmates

Matt McKillop, Research Officer

Alliance for Health Reform  
Health Care Out from Behind Bars: Meeting Prisoners' Needs Efficiently

Washington, DC  
December 11, 2015

### Correctional Health Research



#### Objectives:

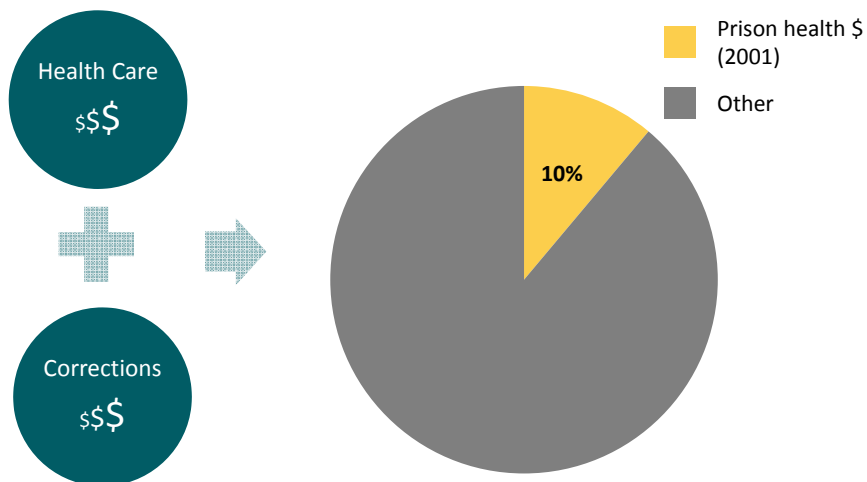
- Provide a long-term look at state prison health care spending
- Help policymakers understanding and preserve the value of state and local spending
- Highlight policies and practices that may contain costs while maintaining or improving public health and safety

## Correctional Health Care Research

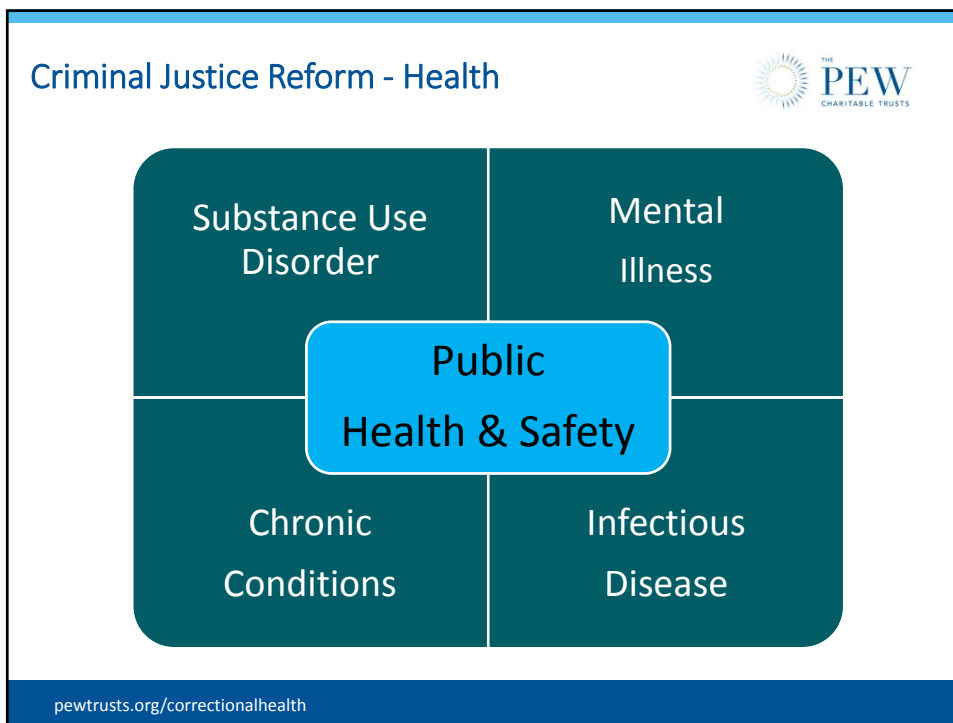
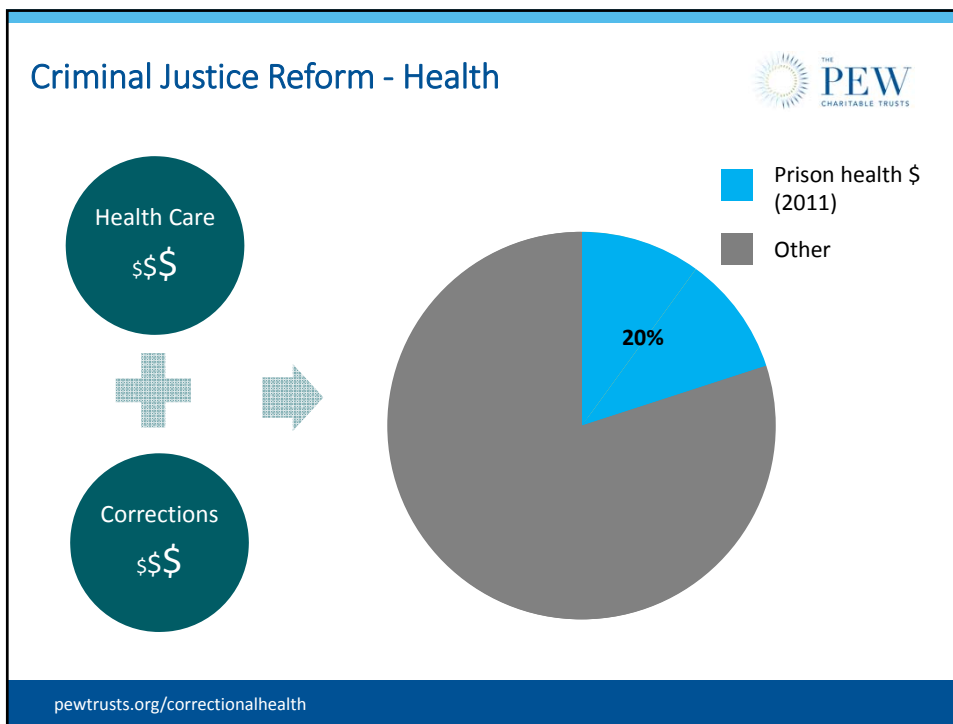


[pewtrusts.org/correctionalhealth](http://pewtrusts.org/correctionalhealth)

## Criminal Justice Reform - Health



[pewtrusts.org/correctionalhealth](http://pewtrusts.org/correctionalhealth)



## Inmate Medicaid Eligibility



*Individuals **who meet states' Medicaid eligibility criteria** "may be enrolled in the program before, during, and after the time in which they are held" in jail or prison.*

~CMS (2004)



[pewtrusts.org/correctionalhealth](http://pewtrusts.org/correctionalhealth)

## Optional ACA Medicaid Expansion



Children

Pregnant women

Parents of  
dependent children

Elderly and disabled  
adults

All individuals  
with incomes  
below 138% of  
federal poverty  
level with  
enhanced  
federal support

[pewtrusts.org/correctionalhealth](http://pewtrusts.org/correctionalhealth)

## Examples of State and Local Enrollment Action



- Massachusetts (pre-ACA)
- Ohio
- New Mexico & Bernalillo County
- Wisconsin (1115 waiver, not ACA expansion)

Sources: Stateline; Ohio ODRC; Albuquerque Journal; Wisconsin DHS

[pewtrusts.org/correctionalhealth](http://pewtrusts.org/correctionalhealth)

## Medicaid Reimbursement for Inpatient Costs



States may not seek federal reimbursement for health care services provided to jail or prison inmates, with one exception: **care delivered outside of prison, such as at a hospital or nursing home, when the inmate has been admitted for more than 24 hours.**

~HHS (1997)



[pewtrusts.org/correctionalhealth](http://pewtrusts.org/correctionalhealth)

## Examples of Inpatient Reimbursement Action



- Kentucky - \$16.4m (FY 2014-15)
- Arkansas - \$2.8m (FY 2014-15)
- Colorado - \$10m (FY2014-15)
- Michigan - \$19.2m (FY2014-15)

Source: Robert Wood Johnson Foundation

[pewtrusts.org/correctionalhealth](http://pewtrusts.org/correctionalhealth)



For additional questions or information, please contact:  
Matt McKillop  
[mmckillop@pewtrusts.org](mailto:mmckillop@pewtrusts.org)  
202-540-6398  
[pewtrusts.org/correctionalhealth](http://pewtrusts.org/correctionalhealth)