



THE
PEW
CENTER ON THE STATES

Oral Health: Putting Teeth into the Health Care System

Julie Stitzel
Pew Center on the States
Alliance for Health Reform Briefing
August 12, 2012

The Pew Children's Dental Campaign

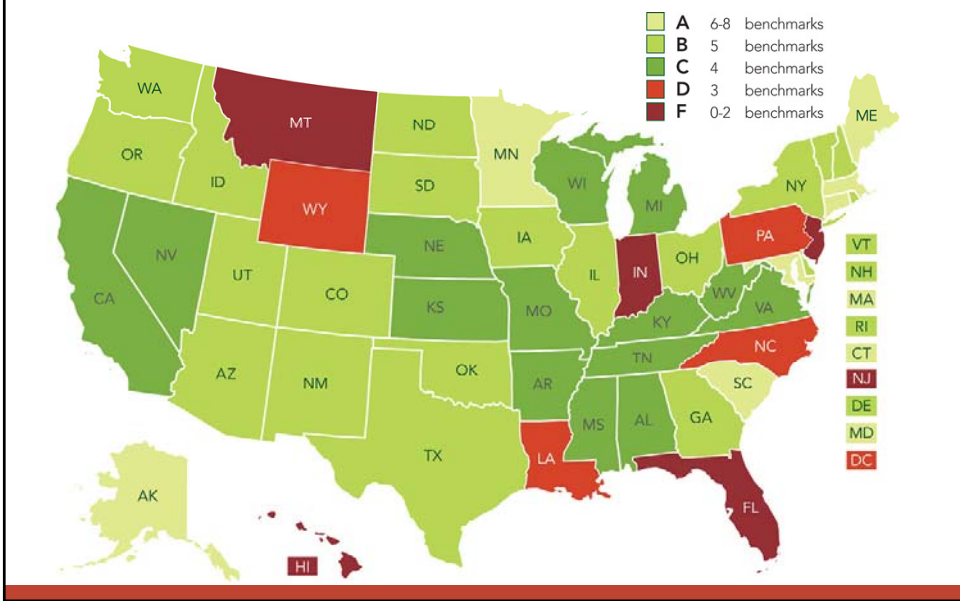


Our Mission:

The Pew Children's Dental Campaign strives for cost-effective policies that will mean millions more children get the basic dental care they need to grow, learn and lead healthy lives.



Making Coverage Matter Pew's 2011 Report on Dental Access



A Costly Destination



Overview of Pew's findings



- Preventable dental conditions were the primary diagnosis in **830,590** visits to hospital ERs nationwide in 2009.
- Children accounted for nearly **50,000** of these ER visits.
- Many ER visits are made by Medicaid enrollees or the uninsured.



www.pewcenteronthestates.com

The wrong care in the wrong place at the wrong time for desperate patients

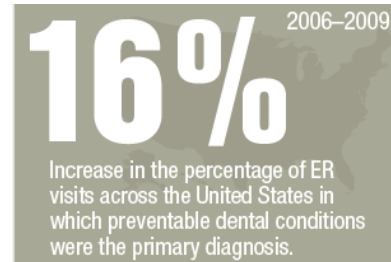
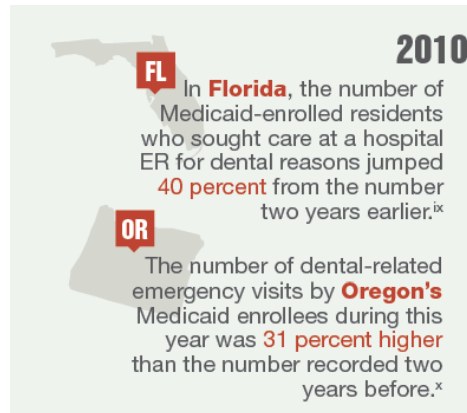


How did so many people with preventable dental conditions end up in a place like this?



www.pewcenteronthestates.com

Disturbing trend: ER use for dental problems



Source: Pew Center on the States (2012) A Costly Dental Destination.

www.pewcenteronthestates.com

Costly, inadequate care



It is a very rare event when I do not see one dental complaint during a (12-hour) shift.

Dr. Alan Sorkey,
ER physician in Louisiana

- \$88 million FL** More than 115,000 hospital ER visits for dental problems produced charges exceeding \$88 million (2010).ⁱ
- \$23 million GA** The approximately 60,000 emergency hospital visits for non-traumatic dental problems or other oral health issues cost more than \$23 million (2007).ⁱⁱ
- \$5 million IA** More than 10,000 visits to hospital ERs for dental reasons cost Medicaid or other public programs almost \$5 million (2007).ⁱⁱⁱ
- \$4.7 million MN** The 10,000-plus dental-related ER visits to seven hospitals in the state's largest urban area cost more than \$4.7 million (2005).^{iv}

Source: Pew Center on the States (2012) A Costly Dental Destination.

www.pewcenteronthestates.com

States feel the impact



WA: A study found that a trip to the ER was the first “dental visit” for 1 in 4 children.

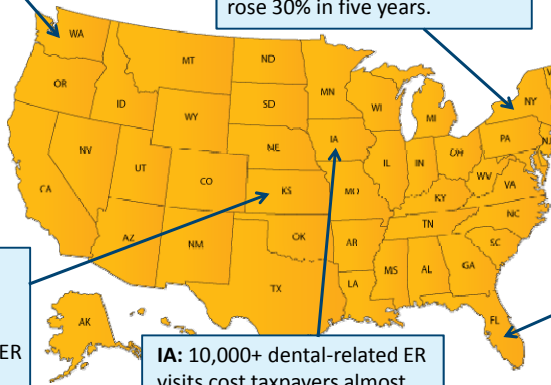
NY: The average charge per ER dental visit for young children rose 30% in five years.

ME: Dental disease was the leading reason for ER visits by Medicaid enrollees and uninsured young people.

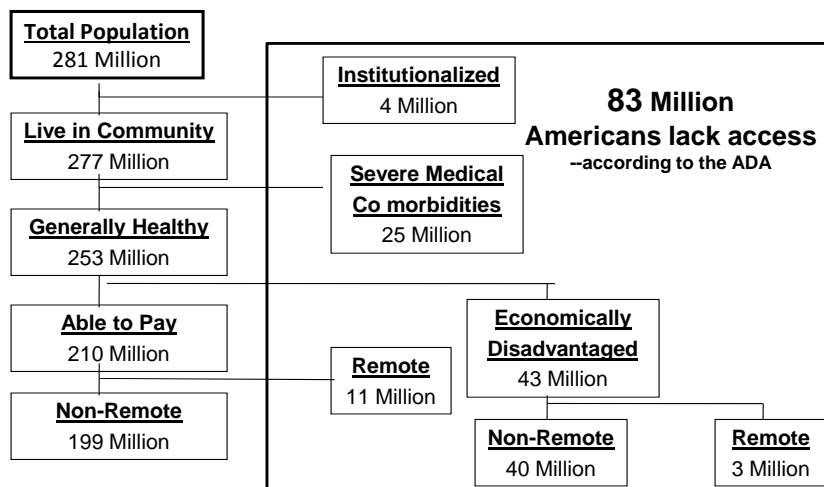
KS: Hospitals reported more than 17,500 dental-related ER visits in 2010.

IA: 10,000+ dental-related ER visits cost taxpayers almost \$5 million in 2007.

FL: There were 115,000+ ER visits in 2010 for dental problems.



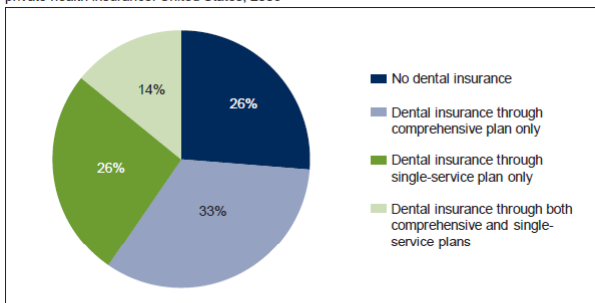
The Tremendous Unmet Need



Millions lack dental insurance



Figure 1. Percent distribution of dental insurance status for persons under age 65 years with private health insurance: United States, 2008



SOURCE: CDC/NCHS, National Health Interview Survey.

- As of 2009, an estimated 130 million U.S. adults and children lack dental coverage

- Approximately 70% of adults 65 and older lack any kind of dental coverage

Source: IOM report, 2011

Source: Centers for Disease Control and Prevention. Available at: <http://www.cdc.gov/nchs/data/databriefs/db40.pdf>

www.pewcenteronthestates.com

One solution to increasing access: Expand the dental team

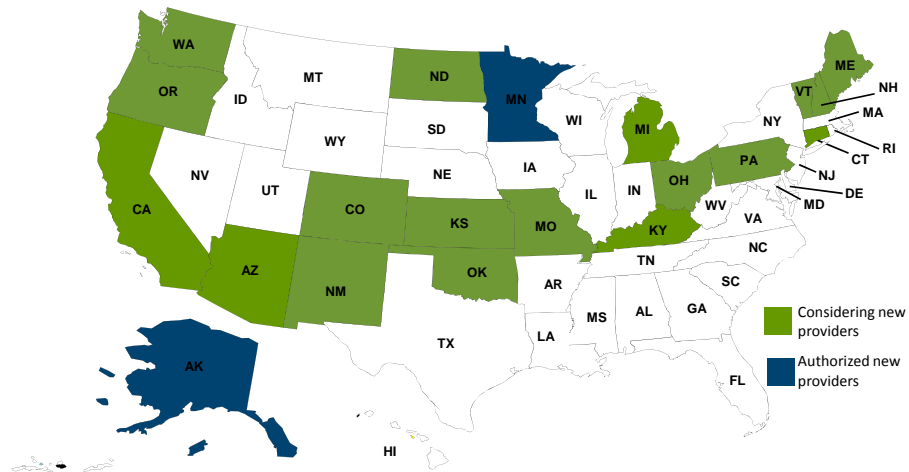


www.pewcenteronthestates.com

States evaluating the dental workforce



States that are exploring new ways to expand the dental workforce



www.pewcenteronthestates.com

13

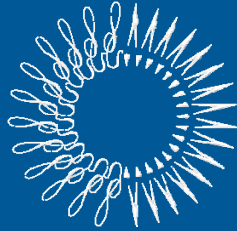


THE
PEW
CENTER ON THE STATES

Keep informed...

of these and other oral health issues by receiving Pew's monthly e-newsletter – *Dental News & Views*.

Send an email to mjacob@pewtrusts.org with the words "I want DNV" in the subject line.



THE
PEW
CENTER ON THE STATES

Julie Stitzel

202.540.6607

jstitzel@pewtrusts.org

www.pewcenteronthestates.com/dental