

THE KRESGE FOUNDATION

Health Program



Capitol Hill Briefing

Investing in a Healthier America: The Role of Social Determinants

Ascension
Alliance for Health
Washington, DC

December 12, 2016

THE KRESGE FOUNDATION

Kresge Today



- Established in Detroit in 1924 by Sebastian S. Kresge.
- National private foundation
- Goal: Expanding opportunities in America's cities
- \$3.6 billion endowment
- Fund through grants and social investments
- Six program areas and two practices

THE KRESGE FOUNDATION

Our Programs



Health

Aims to **reduce health disparities** among children and adults by **addressing conditions** that lead to poor health outcomes.

3

THE KRESGE FOUNDATION

Kresge health program



Living Cully in Portland, a cross-team grant

Seeks to help communities overcome the social and economic disadvantages that contribute to poor health so that all Americans have the chance to enjoy productive, self-determined lives

THE KRESGE FOUNDATION

Strategy 1

Developing healthy places: Advance and scale place-based, community driven strategies to develop healthier communities.

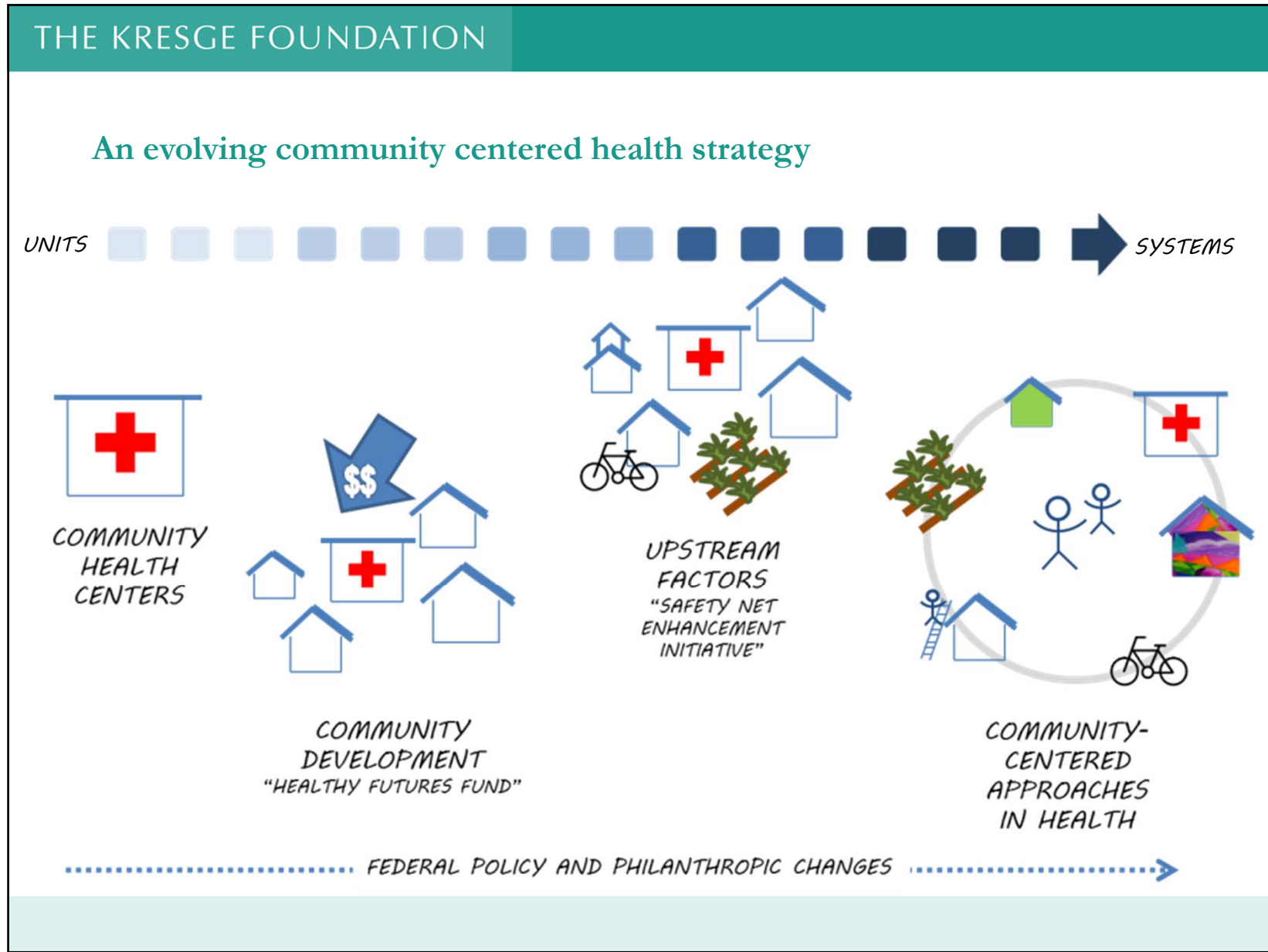


THE KRESGE FOUNDATION

Strategy 2

Accelerating community centered approaches within the health system: Accelerate and expand adoption of population health approaches in health care and public health





THE KRESGE FOUNDATION

Community centered health initiatives

*Community Centered
Health Homes Initiative
(TBA)*

The
**BUILD
HEALTH**
Challenge



PRAPARE :Protocol for responding to and
assessing patients' assets risks experiences

THE KRESGE FOUNDATION

Thank You

Expanding opportunities in America's cities

David D. Fukuzawa
Managing Director – Health and Human Services

ddfukuzawa@kresge.org

@KresgeHealth

@KresgeHumanSvcs

3125 W. Big Beaver Road

Troy, Mich. 48084

248-643-9630

kresge.org