

Embracing NH as the Place of Care and Site of Death for Older Frail, Americans

*Joan M Teno, M.D., M.S.
Professor of Community
Health and Medicine
Associate Medical Director,
Home and Hospice Care of RI*



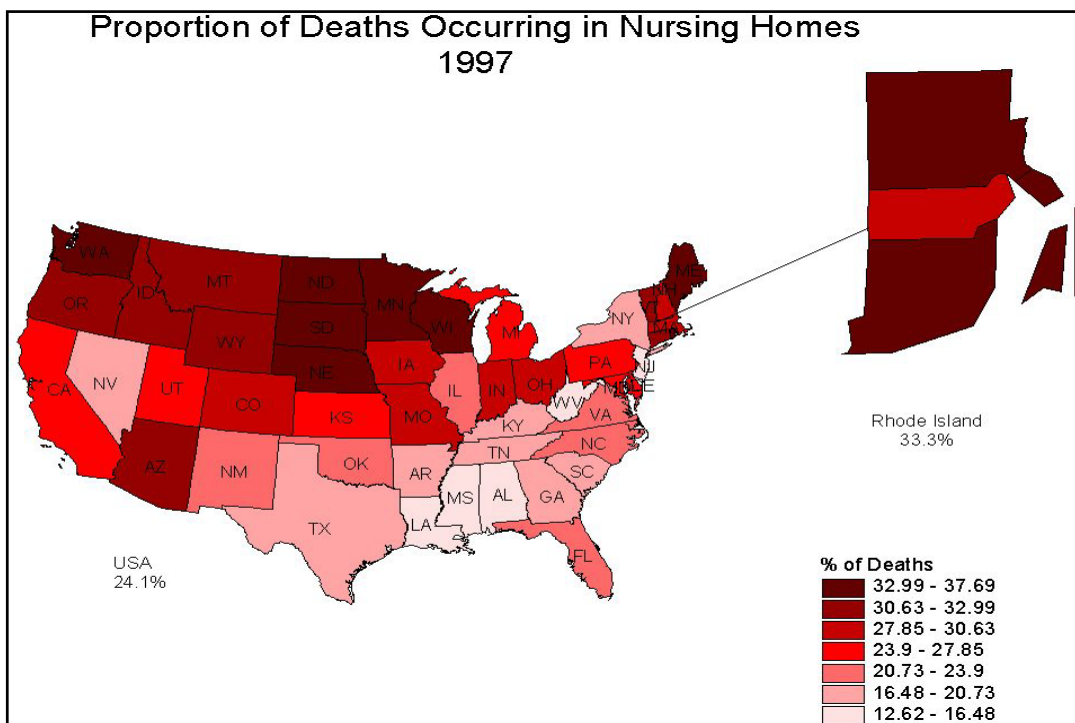
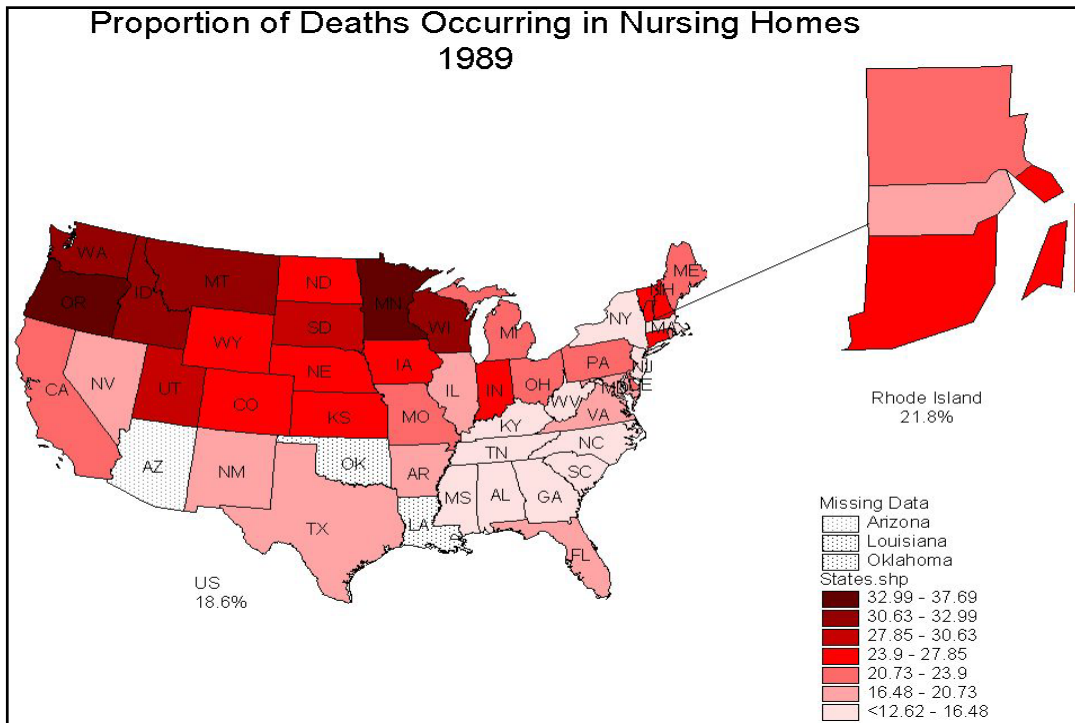
QUALITY CARE AND COMFORT AT THE END OF LIFE: Changes Needed?

June 8, 2007

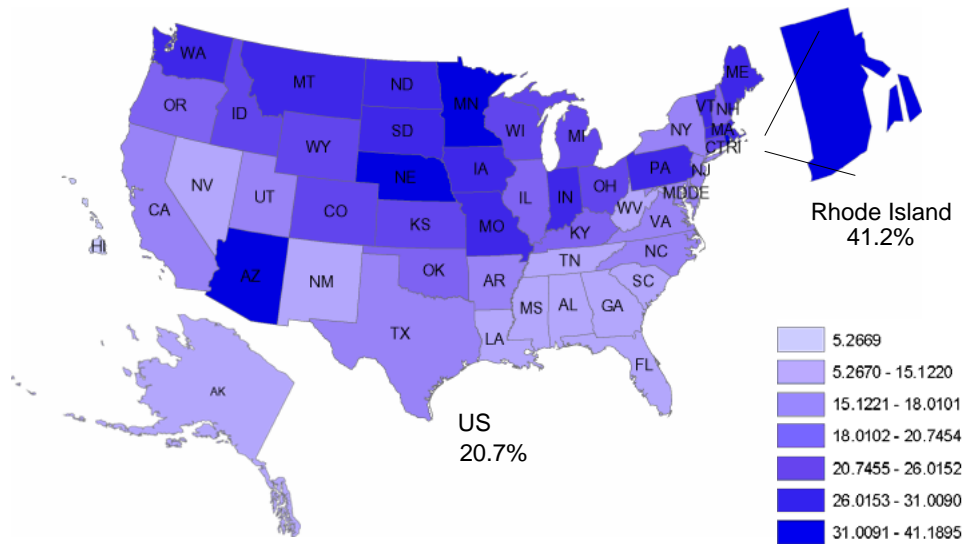
Four Key Points....

1. **Increasingly, NH are key site of end of life care in the US. They are home for many Americans in their last years of life**
2. **Hospice provides important services that enhance the quality of life. State and Federal policies impact hospice access.**
3. **Lost in transition: Inefficiency in the health care system are associated with potentially burdensome care for the dying.**
4. **As we innovate in our health care system, it is important that regulatory mechanisms are in place to protect older, vulnerable persons.**





Proportion of Cancer Deaths Occurring in Nursing Homes
2001
Ages 65 and older



Research on Benefits of Hospice Care

Studies Documenting Superior Outcomes

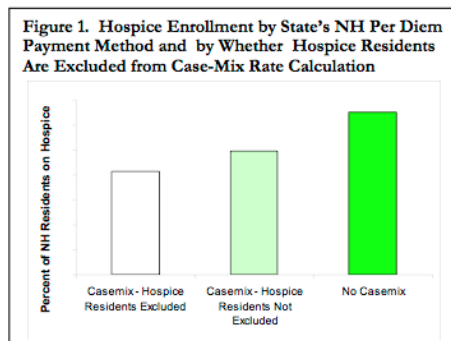
- ☒ Greater satisfaction
- ☒ Less invasive treatment
- ☒ Fewer Hospitalizations
- ☒ Better Care Practices
- ☒ Hospice and Palliative Medicine is scientific body of knowledge, skills, and expertise that enhance the quality of life of the dying person and their family.

State and Federal Policy Impact on access to Hospice

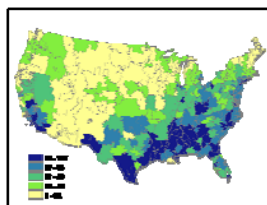
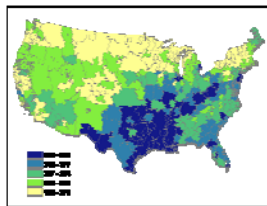
⌘ Casemix important
impact on hospice
enrollment

⌘ Source

- ☒ Susan Miller, Ph.D.
- ☒ Center for Gerontology
and Health Care Research



Lost in Transition: Inefficiencies that lead to potentially unwanted care and higher health care costs



- ⌘ On average, a NH resident experiences 3.3 transitions in the last six months of life. In some regions, this is as high as 5.1 transitions per person.
- ⌘ Persons with advance dementia residing in regions with the highest quintile of transitions are 2.5 times more likely to have a feeding tube inserted.
- ⌘ Hospice reduces transitions in the last year of life.

Importance of Regulation



⌘ **As we innovate in our health care system, it is important that regulatory mechanisms are in place to protect older, vulnerable persons.**