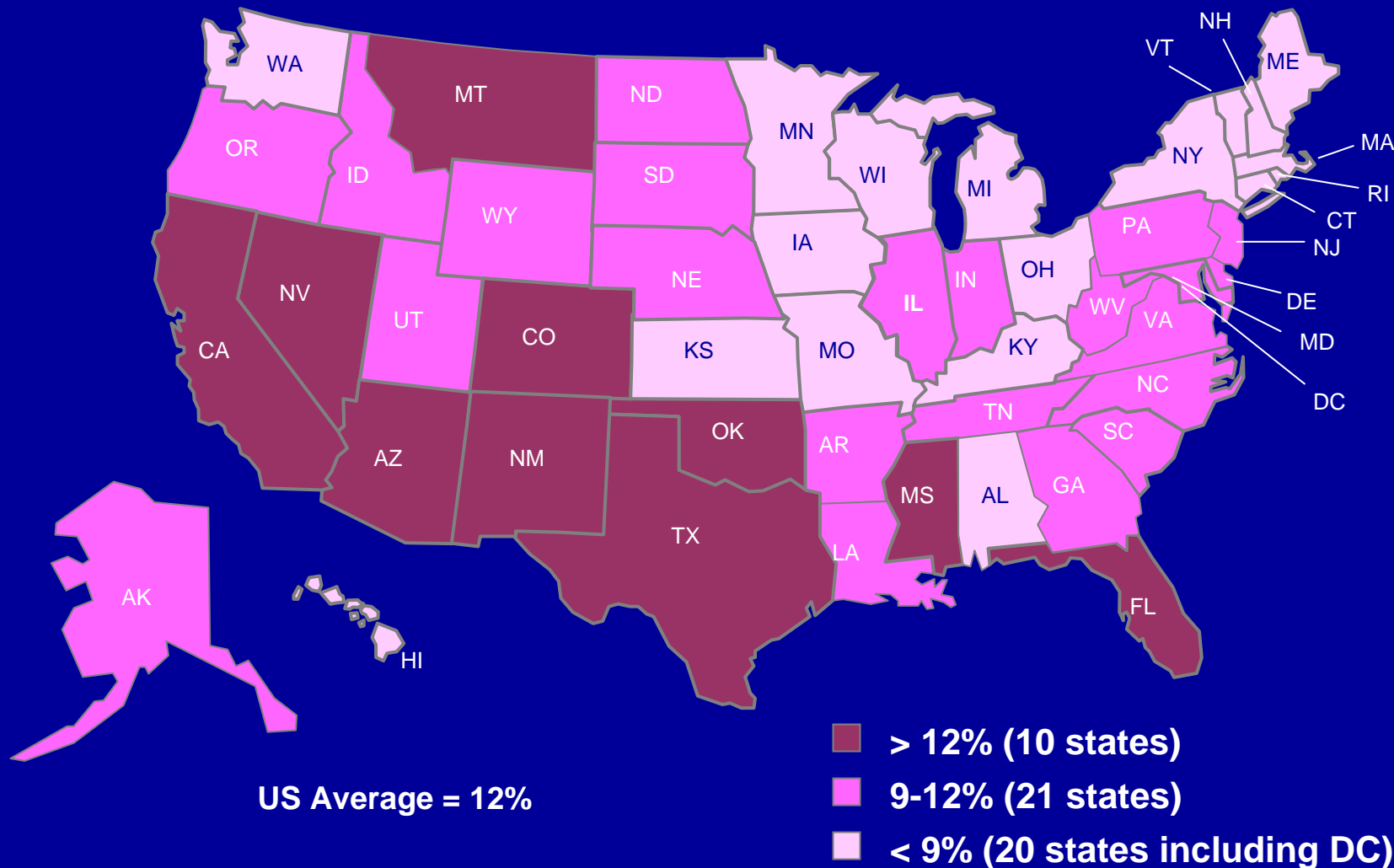


# **SCHIP: Let the Discussions Begin**

**Diane Rowland, Sc.D.**  
**Executive Vice President,**  
**Henry J. Kaiser Family Foundation**  
**and**  
**Executive Director,**  
**Kaiser Commission on Medicaid and the Uninsured**  
***for***  
**Alliance for Health Reform**  
**February 9, 2007**

Figure 1

# Uninsured Rates for Children under 18, by State, 2004-2005



SOURCE: Urban Institute and KCMU analysis of the March 2006 Current Population Survey. Two-year pooled estimates for states (2004-2005); US (2005).

Figure 2

# SCHIP Builds on Medicaid for Children's Coverage

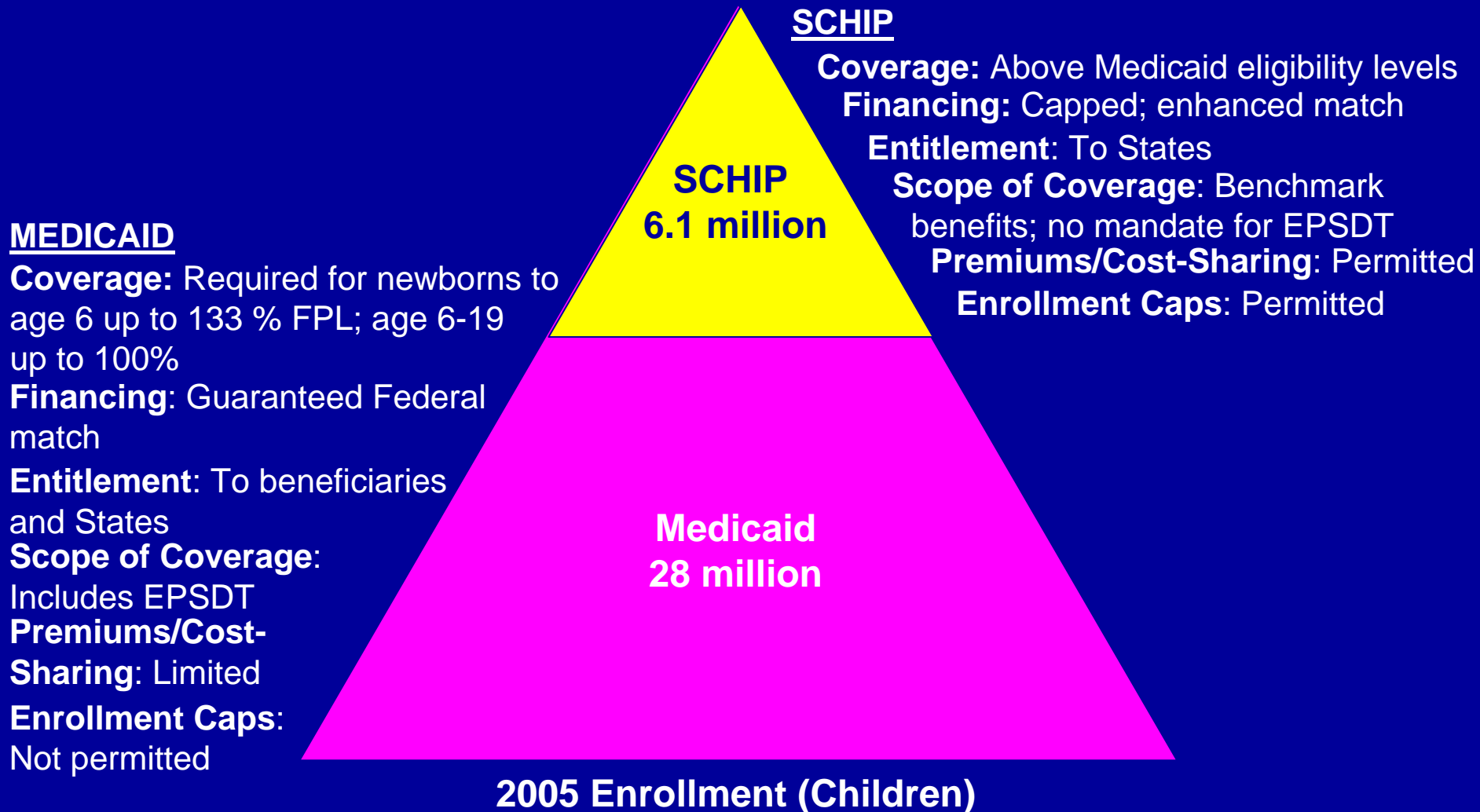


Figure 3

# Percentage of Children Without Health Insurance, By Poverty Level, 1997-2005

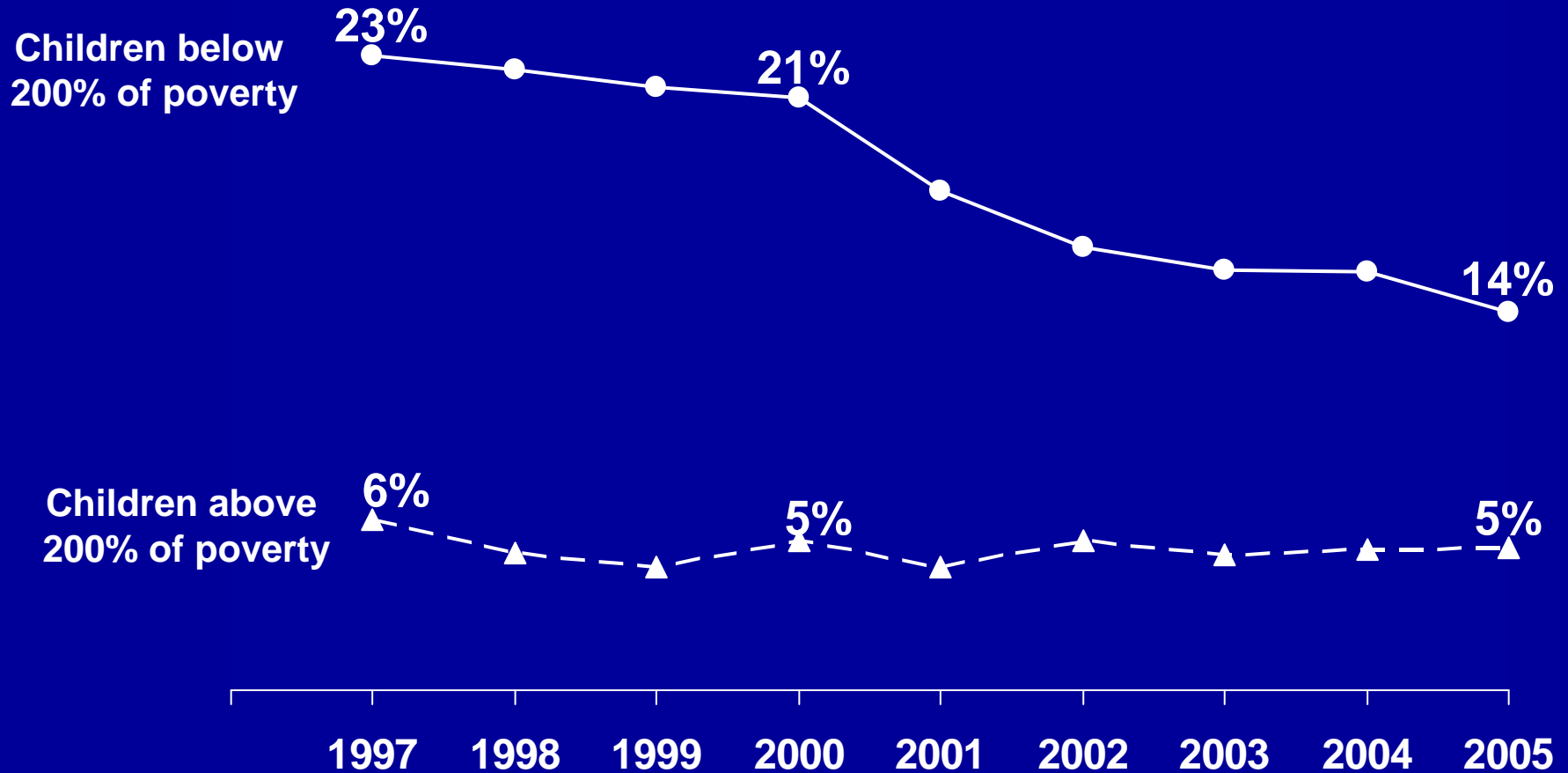
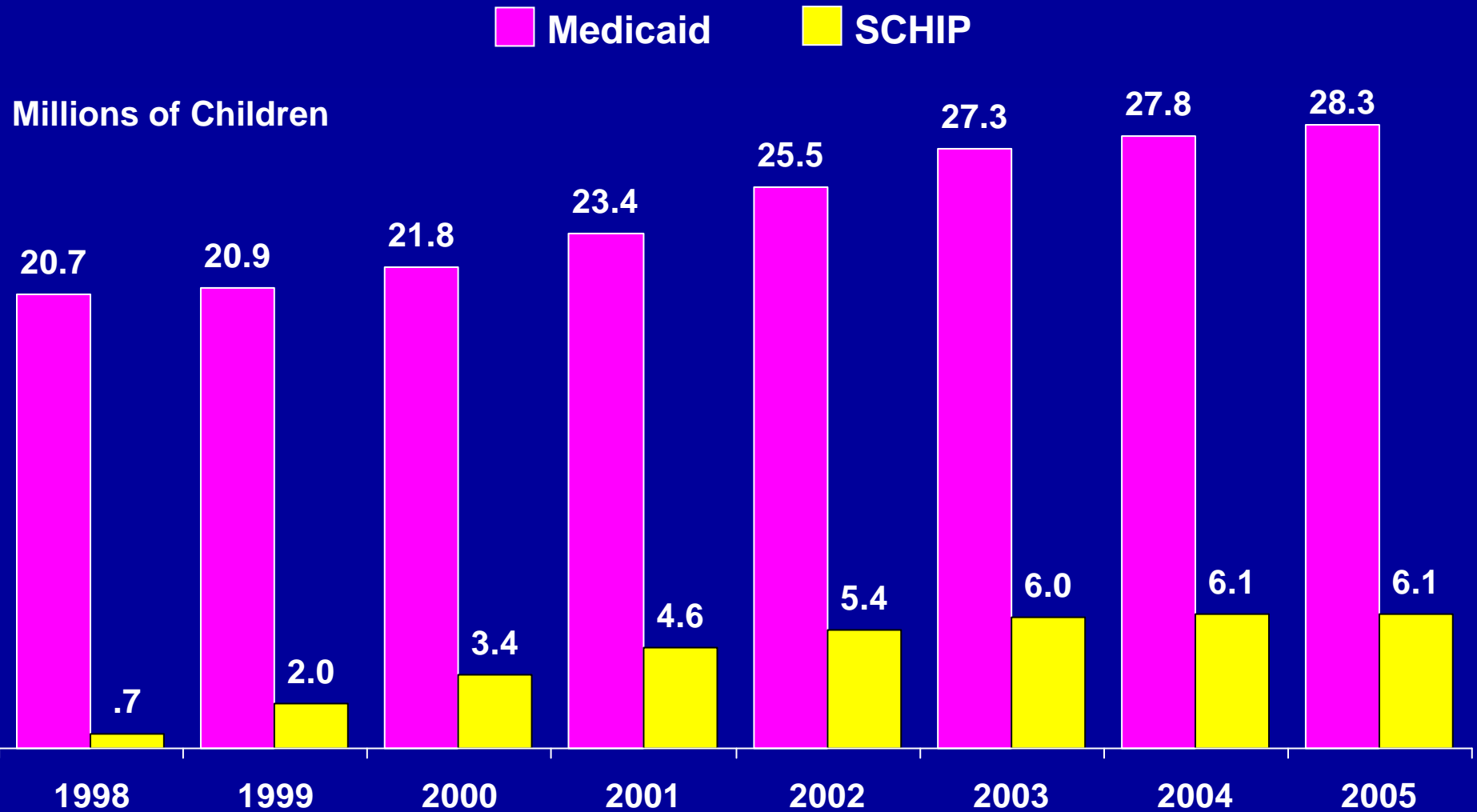


Figure 4

# SCHIP and Medicaid Enrollment of Children, FY 1998 – FY 2005

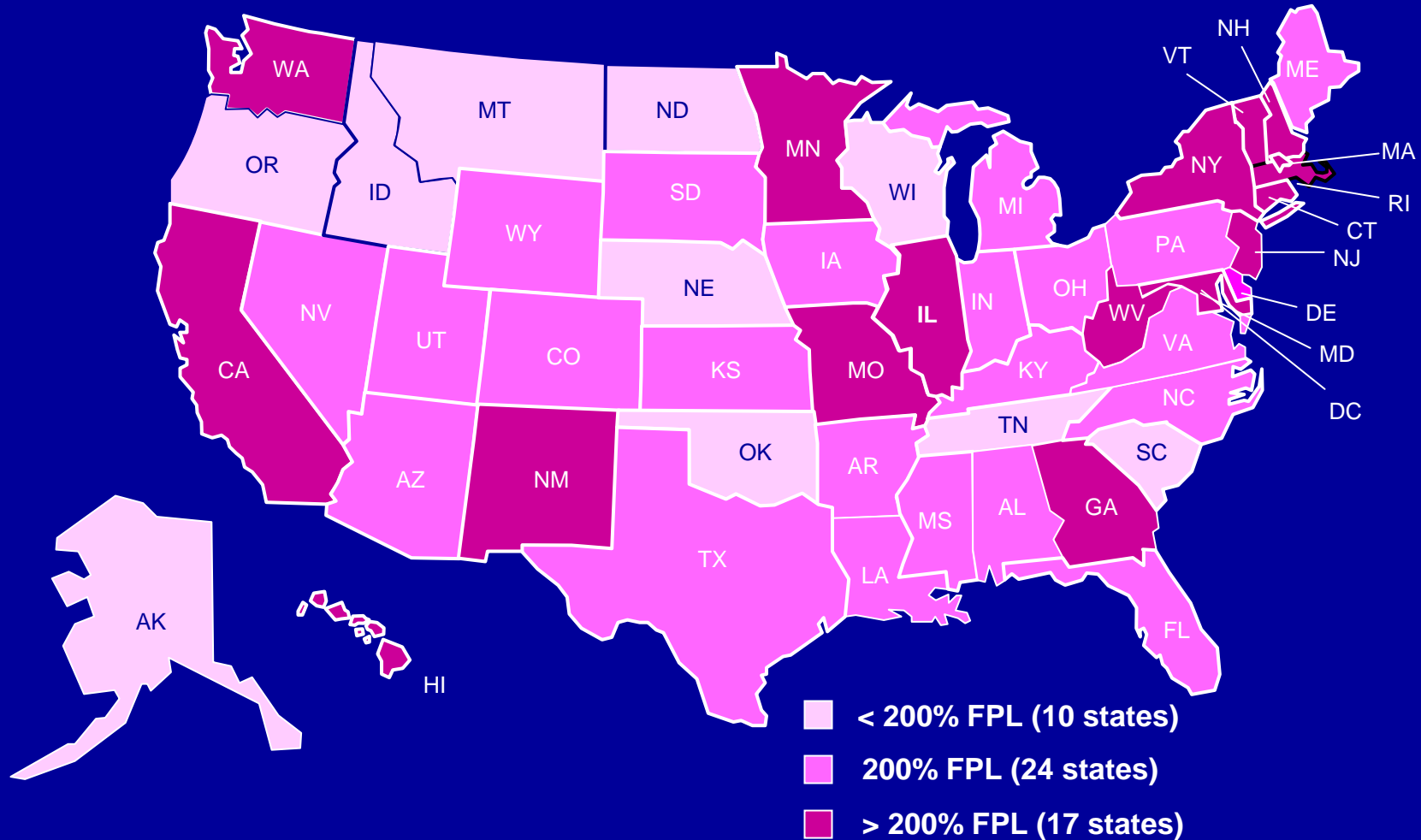


SOURCE: Kaiser Commission on Medicaid and the Uninsured and Urban Institute analysis of HCFA-2082, MSIS, and SEDS data, 2007.

**K A I S E R C O M M I S S I O N O N**  
Medicaid and the Uninsured

Figure 5

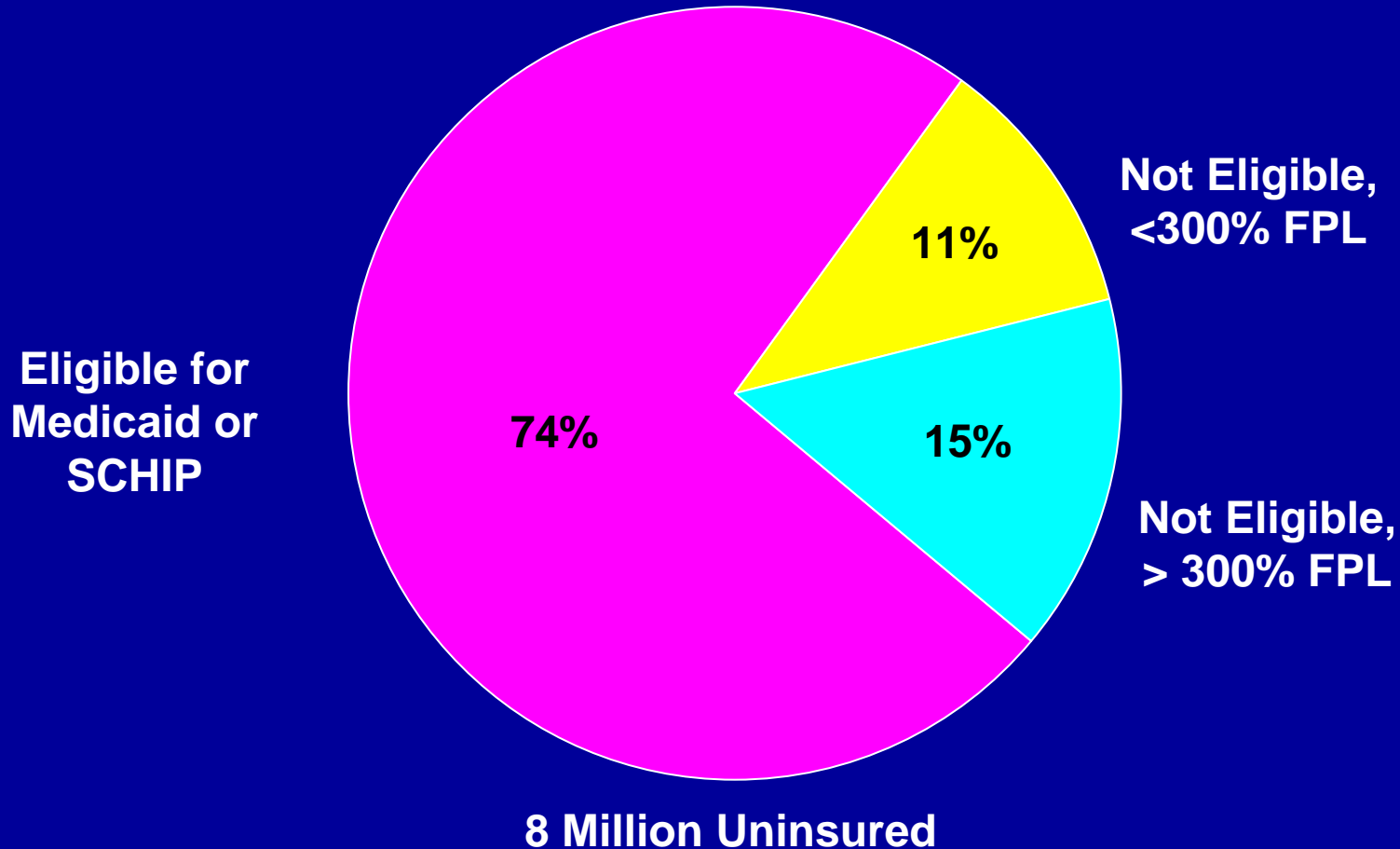
# Children's Eligibility for Medicaid/SCHIP by Income, July 2006



\*The Federal Poverty Line (FPL) for a family of three in 2006 is \$16,600 per year.  
SOURCE: Based on a national survey conducted by the Center on Budget and Policy Priorities for KCMU, 2006.

Figure 6

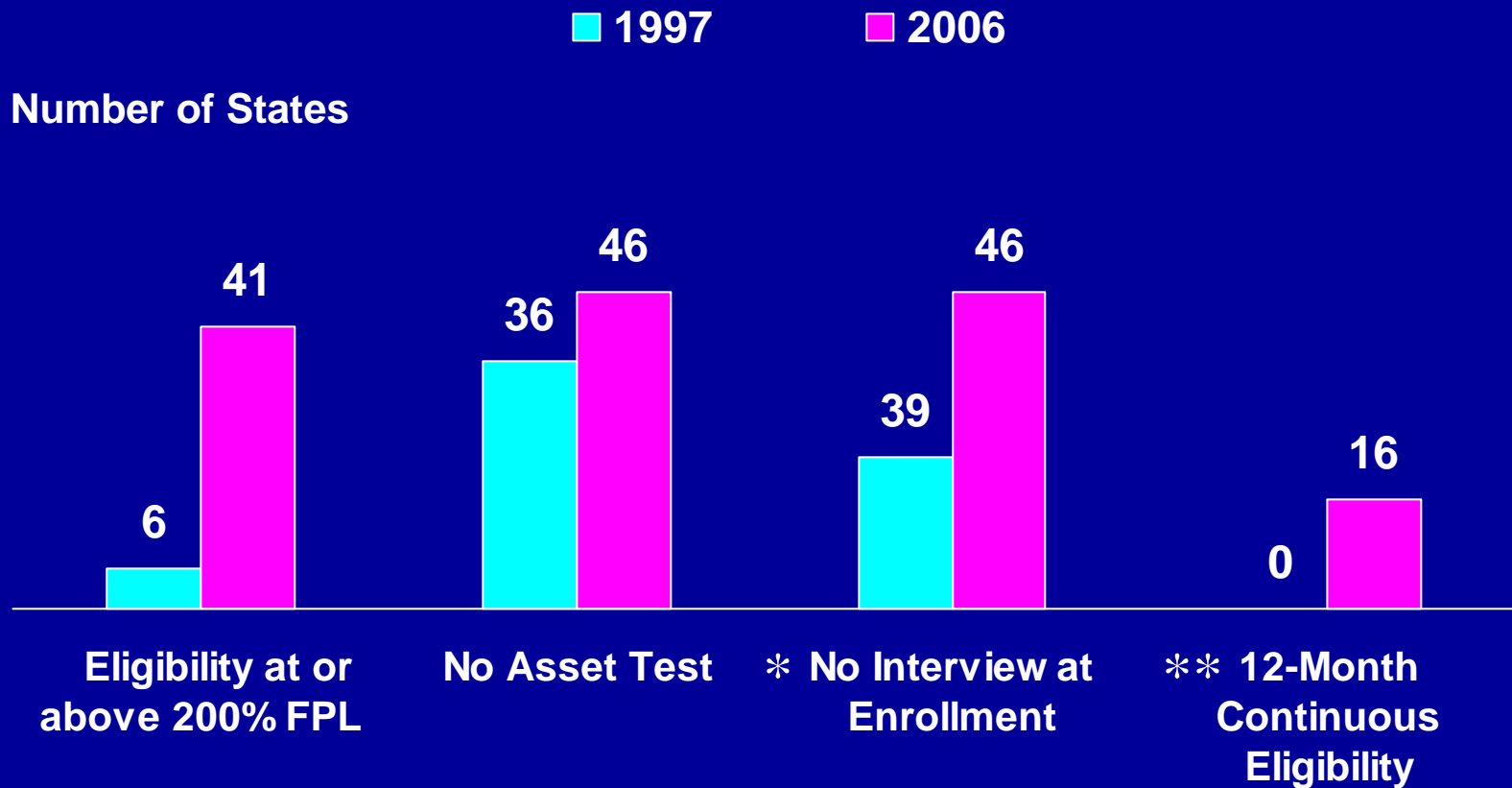
# Distribution of Uninsured Children by Eligibility for Medicaid/SCHIP, 2004



\*The Federal Poverty Level (FPL) for a family of three in 2004 is \$15,067 per year  
SOURCE: Urban Institute analysis of the 2005 Annual and Social Economic Supplements to the CPS for KCMU. Data has been adjusted for the Medicaid undercount. CPS does not fully account for immigration status so estimates in the eligible category potentially include some undocumented children.

Figure 7

# Progress in Children's Access to Medicaid and SCHIP Coverage



\*Earliest data measuring 12-Month Renewal period collected in July 2000

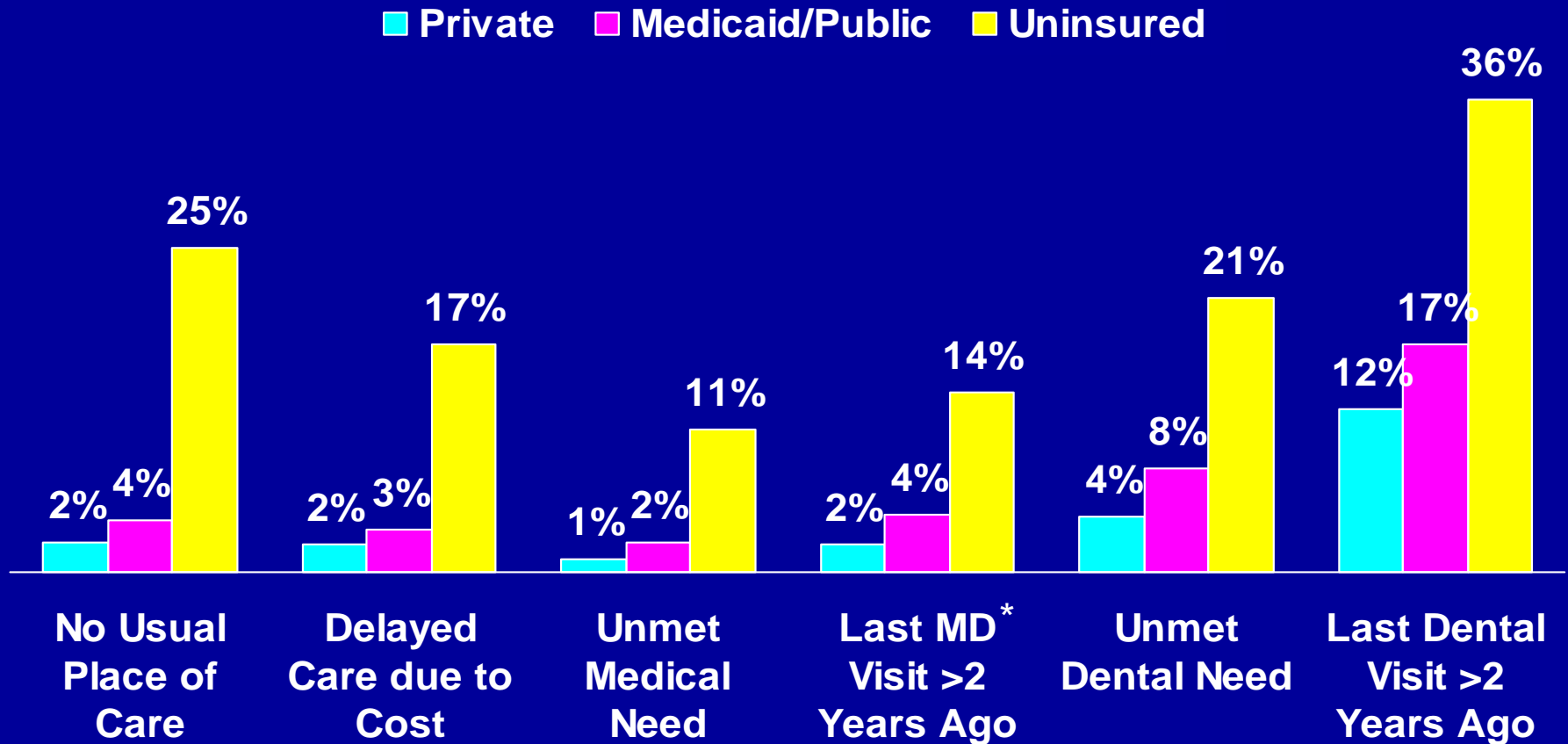
\*\*Not an option – earliest data measured in November 1998; in 2006 an additional 11 states apply Continuous Eligibility to their SCHIP program

SOURCE: Based on a national survey conducted by the Center on Budget and Policy Priorities for KCMU, 2006.



Figure 8

# Children's Access to Care, by Health Insurance Status, 2004



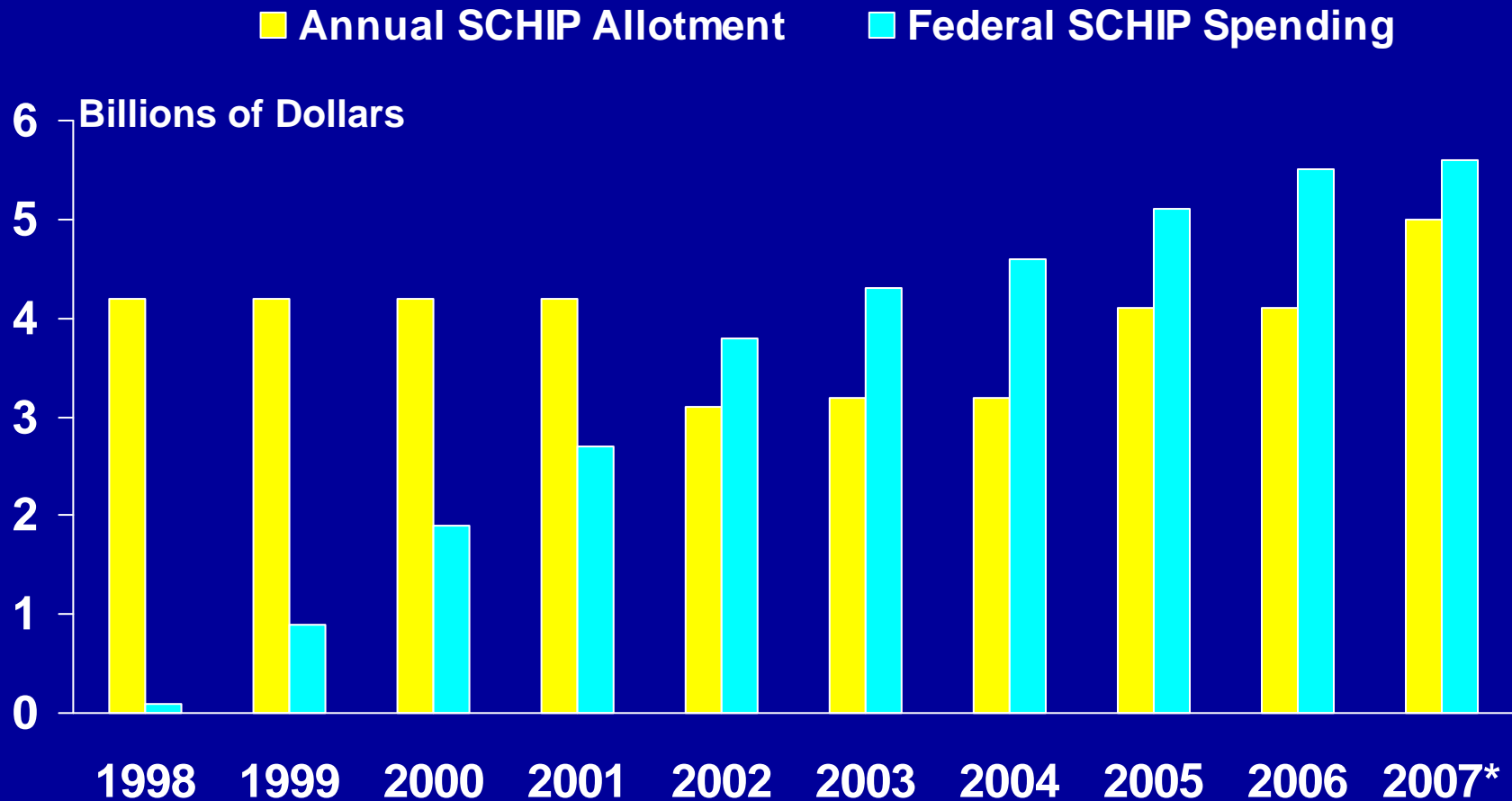
\* MD or any health care professional, including time spent in a hospital. All estimates are age-adjusted.

Source: National Center for Health Statistics, CDC. 2006. Summary of Health Statistics for U.S. Children: National Health Interview Survey, 2004

**K A I S E R C O M M I S S I O N O N**  
Medicaid and the Uninsured

Figure 9

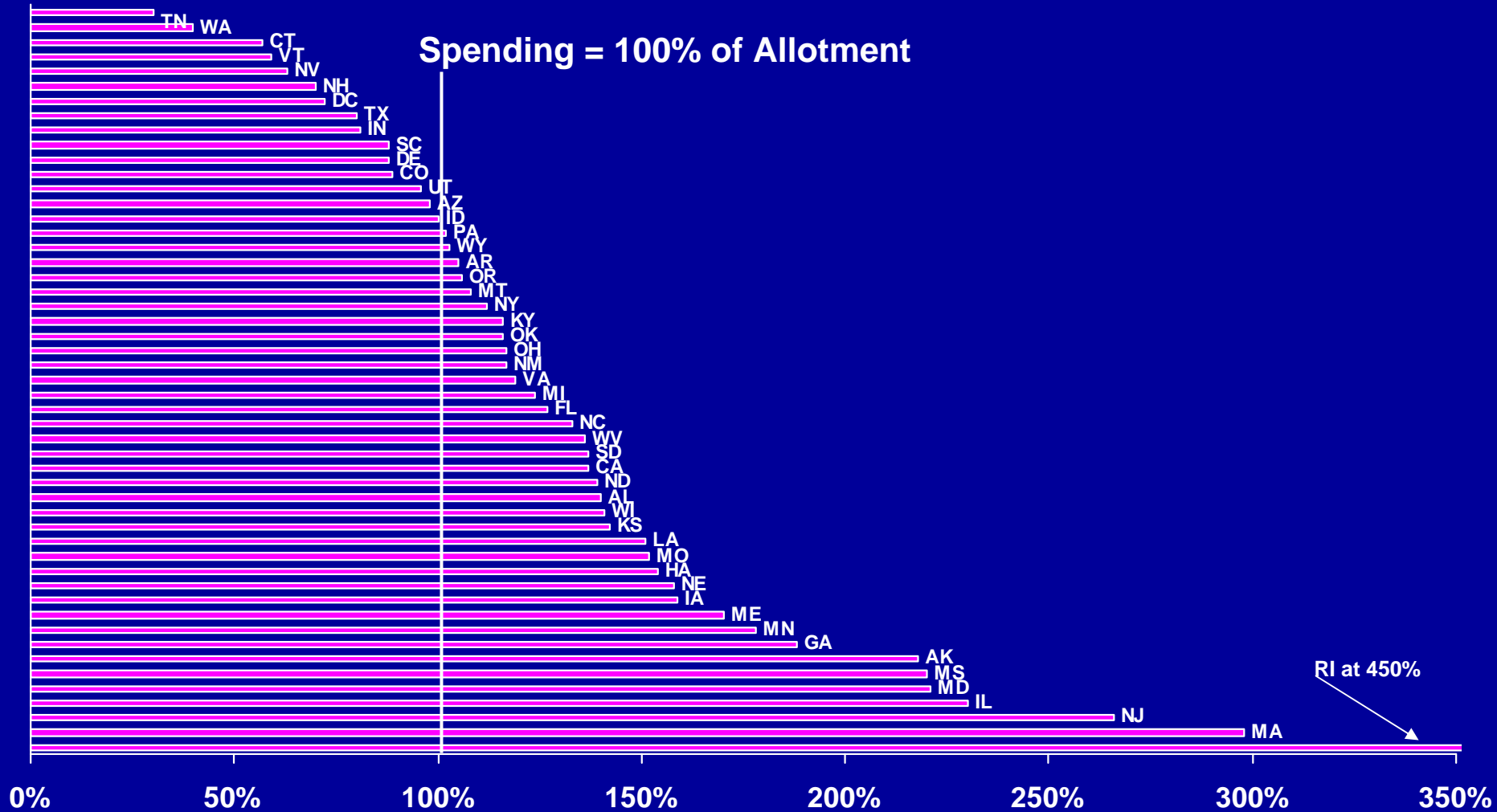
# Spending for SCHIP first outpaced SCHIP allotments in 2002



SOURCE: "SCHIP Original Allotments: Funding Formula Issues and Options", October 2006. Congressional Research Service. 2006 and 2007 data from the President's FY 2008 Budget submission. \*2007 Projected

Figure 10

# Spending Expected to Exceed Allotments in 37 States in FY 2007



SOURCE: Data on allotments and spending from CRS, State Children's Health Insurance Program: A Brief Overview. 10/12/2006. National average is 130%