

# COMMUNITY HEALTH ALLIANCE

**WHAT DOES THE ACA REPEAL MEAN FOR NEVADA?**  
CHARLES DUARTE, CEO

1

## About CHA

COMMUNITY  
HEALTH  
ALLIANCE

- Non-profit tax-exempt organization in Northern Nevada
- Community Health Center
- Provides integrated medical and behavioral health care services, as well as dental services, pharmacy and nutrition services.



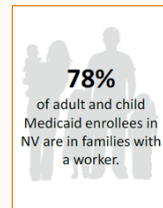
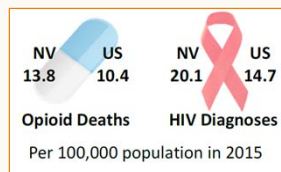
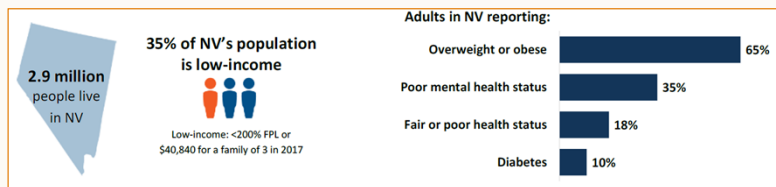
2

## About Our Patients

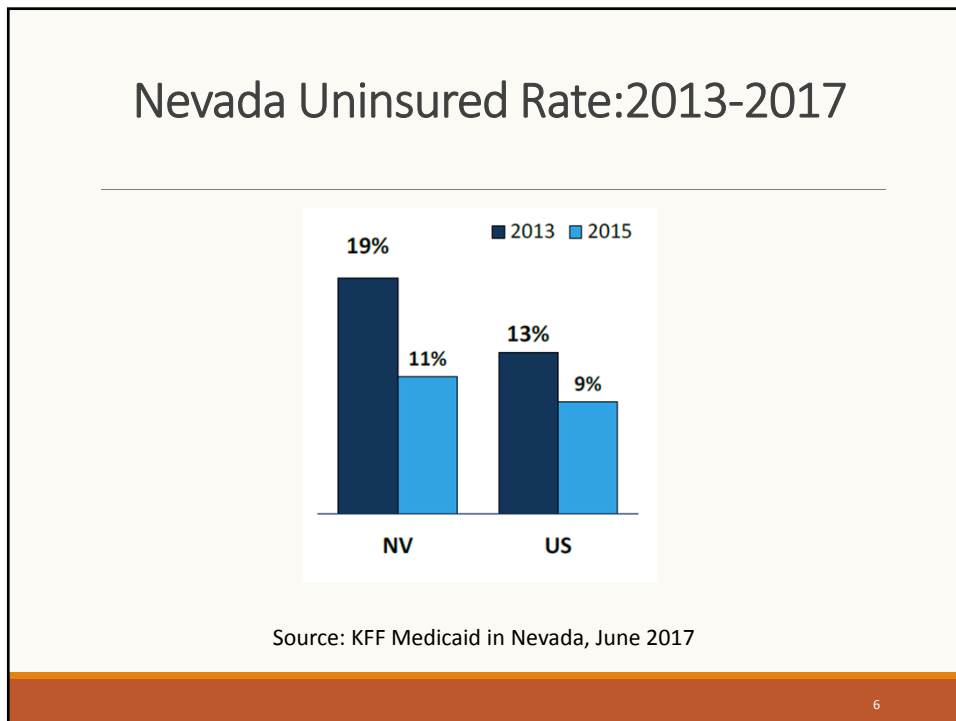
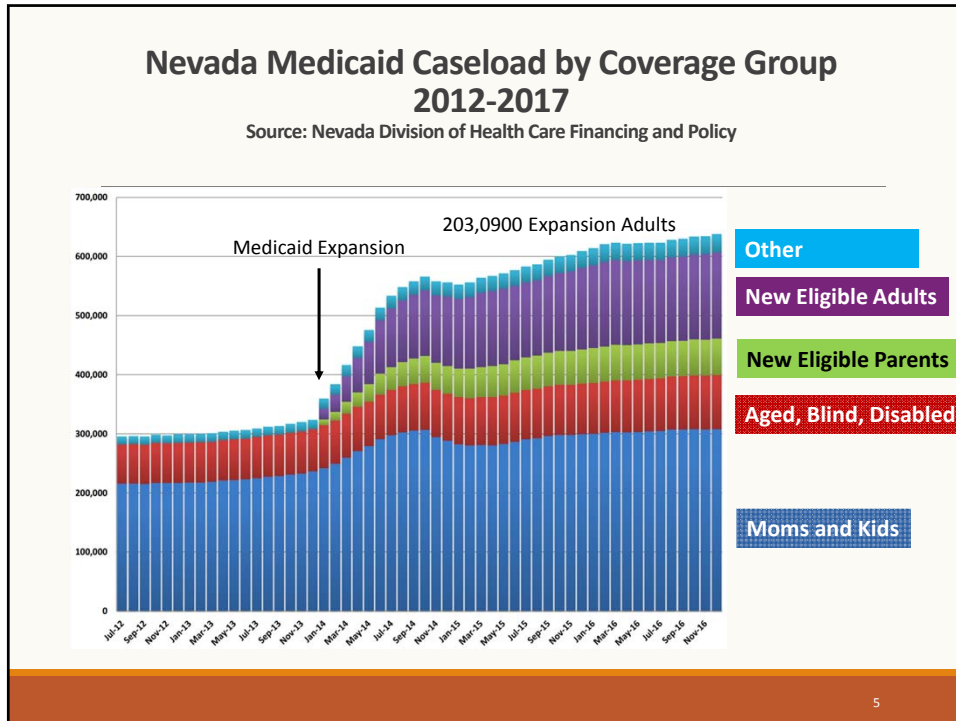
- 30,000+ patients / 44% children
- 100,000+ annual patient visits
- 60% Hispanic
- Majority Medicaid and Medicare



## Nevada Snapshot



Source: KFF Medicaid in Nevada, June 2017



## CHA Patients: Before and After Medicaid Expansion

Children	2013	2017	Variance
Uninsured	41.0%	16.8%	-59.0%
Medicaid/CHIP	58.0%	72.8%	25.5%
Adults	2013	2017	Variance
Uninsured	78.6%	22.1%	-71.9%
Medicaid/CHIP	10.0%	43.4%	334.0%
Total	2013	2017	Variance
Uninsured	60.2%	19.8%	-67.1%
Medicaid/CHIP	33.1%	56.2%	69.8%

7

## Angela's Story

Source: KUNR "The ACA Helped with Type 2 Diabetes: One Woman's Story" March 19, 2017



Angela Siegfried is a CHA patient in our Center for Complex Care. She has Type 2 diabetes and needs oxygen. Before the Nevada Medicaid Expansion she was uninsured. Today she is grateful to have oxygen for her COPD.


"I would just get really sick and end up in hospitals and emergencies. They'd keep me, get a little bit well and send me on my way."

She worked as a bank loan officer but became too ill to work and lost her insurance. She now has Medicaid coverage and is spending time with her grandsons. "I go to soccer games; I get to go to church. I'm not bedridden."

"I don't ever want to be in this life without insurance. What's going to happen? The only thing, you're going to end up dying, and you probably could have prevented it."

8

## ***Navigating Medicaid in Rough Seas***



-  **Eligibility**
-  **Services**
-  **Utilization**
-  **Payments**
-  **Managed Care**

9

## **For More Information:**

COMMUNITY HEALTH ALLIANCE

- Visit our website:
  - [www.chanevada.org](http://www.chanevada.org)
- Like/follow us on Facebook/Twitter:
  - Community Health Alliance
- Call for an appointment:
  - 775-329-6300



10

COMMUNITY  
HEALTH  
ALLIANCE

## Questions?

---

Charles Duarte, CEO  
680 S. Rock Blvd.  
Reno, NV 89502  
PH: 775-336-3017  
Cell: 775-781-1603  
Email: [cduarte@chanevada.org](mailto:cduarte@chanevada.org)

11