


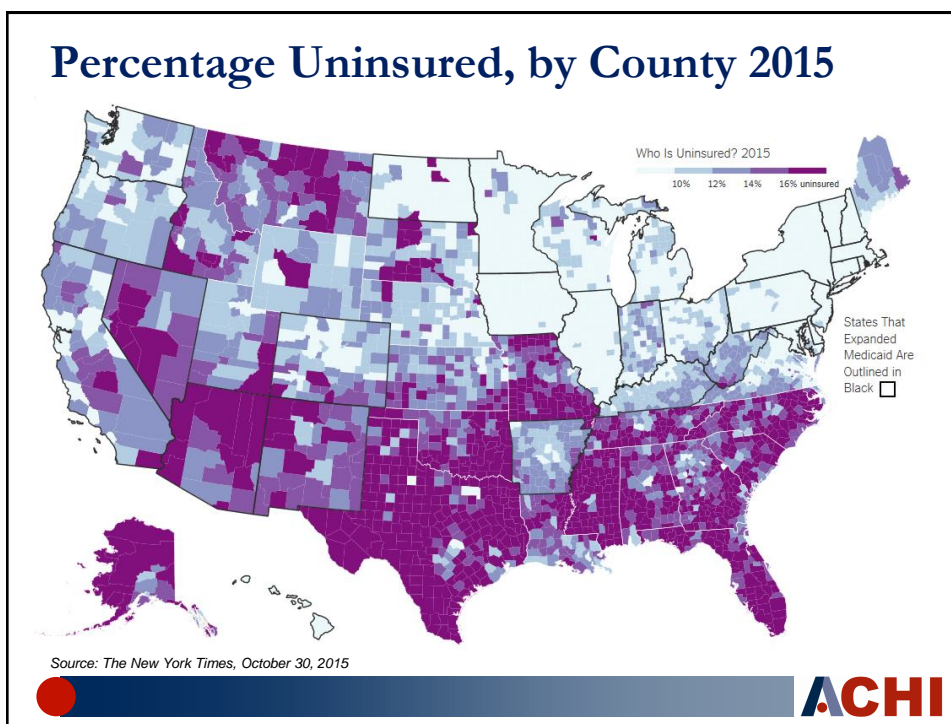
Deaths of Despair: A State-Specific Perspective

Joseph W. Thompson, MD, MPH
President and CEO, Arkansas Center for Health Improvement
Professor, UAMS Colleges of Medicine & Public Health

@JoeThompsonMD
@ACHI_Net



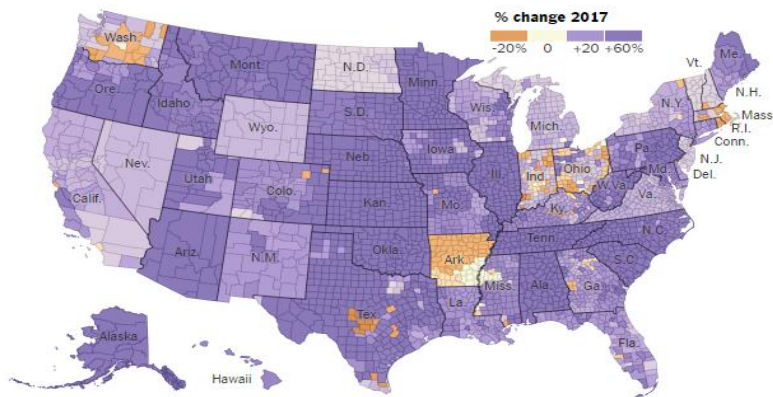
ARKANSAS CENTER FOR HEALTH IMPROVEMENT



Obamacare Rates Rising

But there's a lot of variation. In some Arizona counties, prices for the most affordable midlevel plan are going up by 191 percent. In parts of Texas, premiums are going down by 30 percent.

2017 premium increase for lowest-cost silver plan



Note: There are two separate markets in Los Angeles County. We have shown rates for the market where more customers are enrolled.

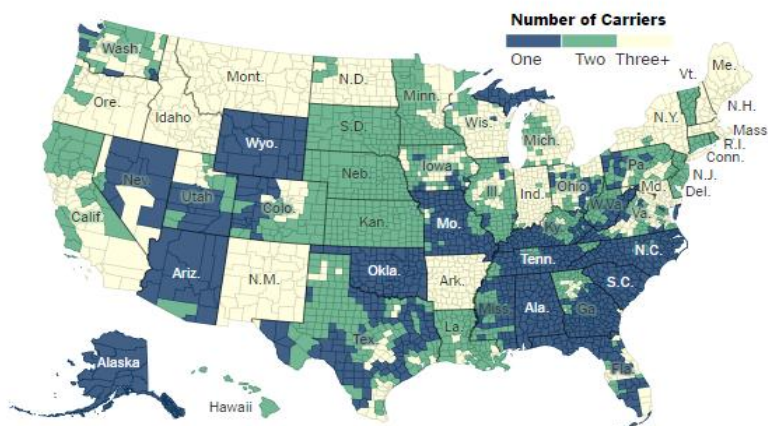
Source: McKinsey Center for U.S. Health System Reform



Competition Has Fallen in the U.S.

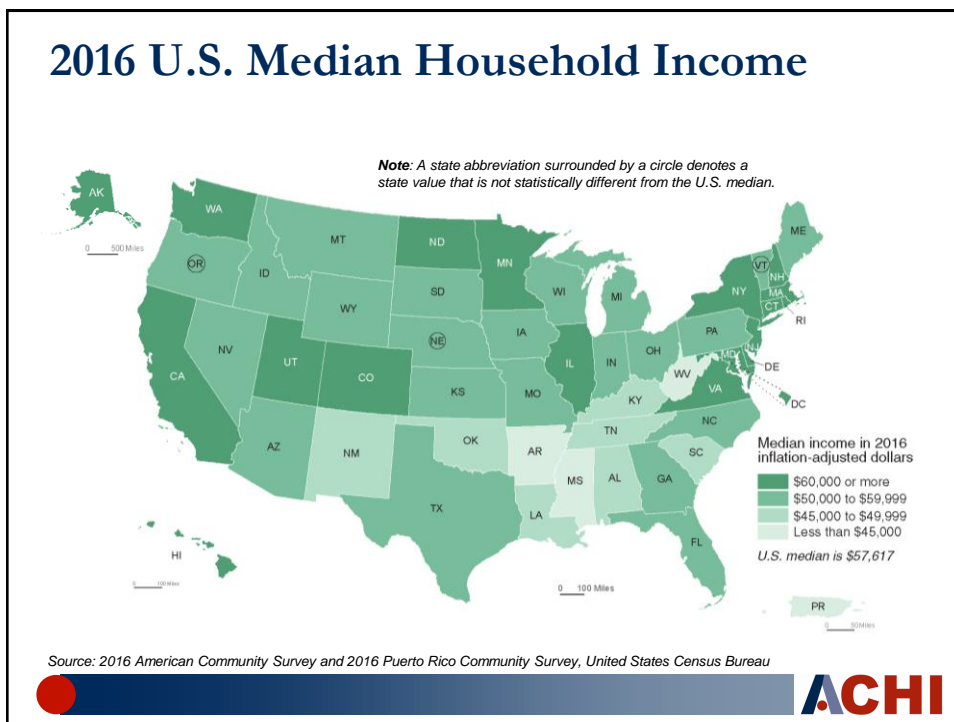
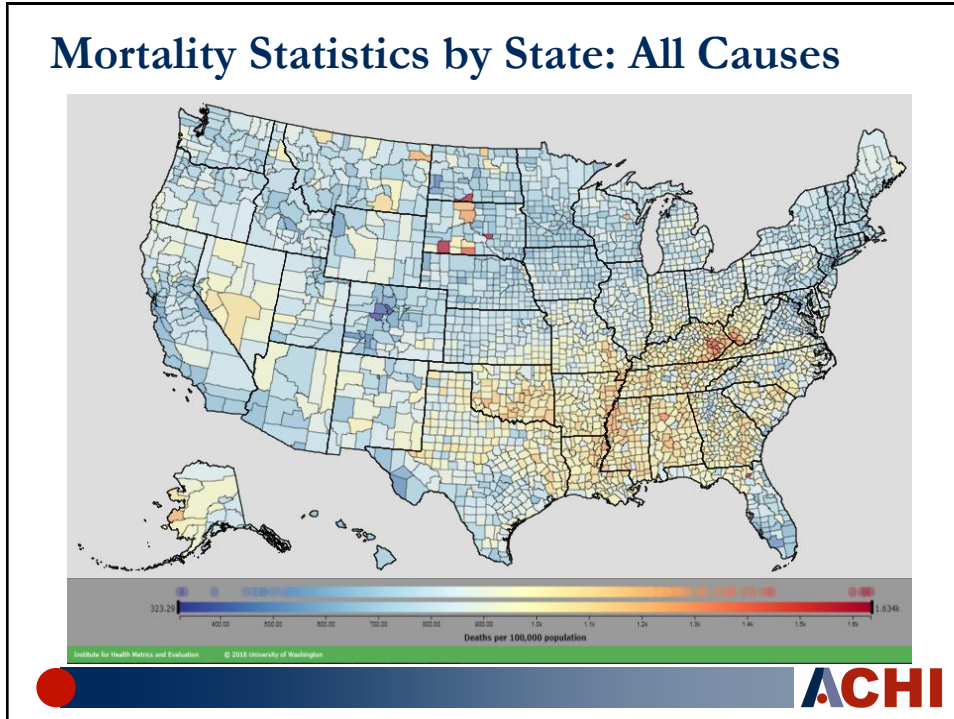
About 18 percent of people eligible for the Obamacare markets will live in counties with only one insurance carrier offering health plans next year.

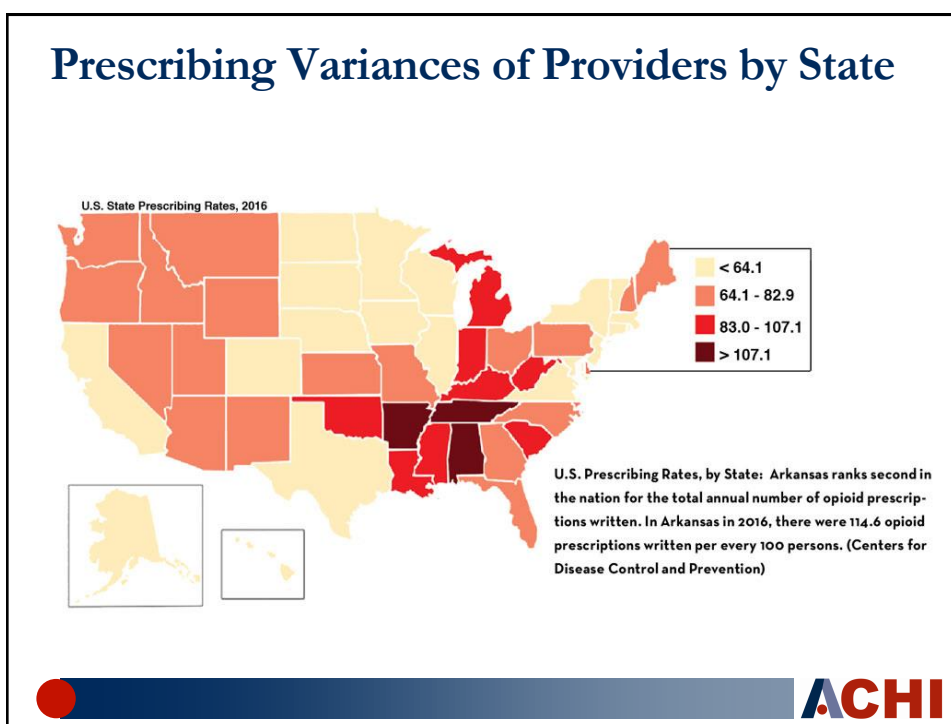
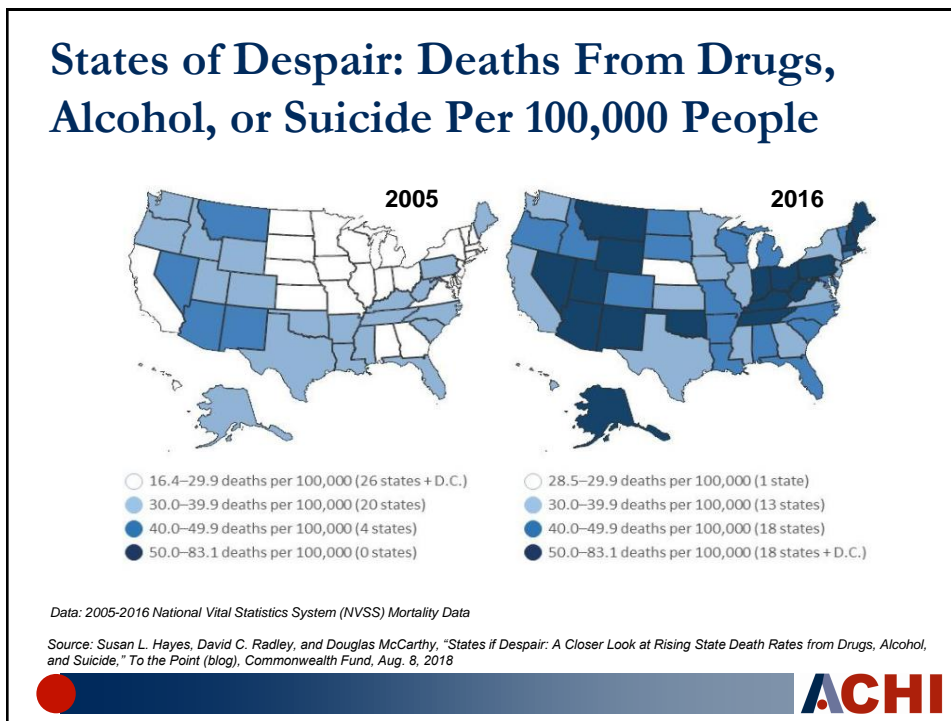
Number of insurance carriers in the Obamacare markets



Source: McKinsey Center for U.S. Health System Reform





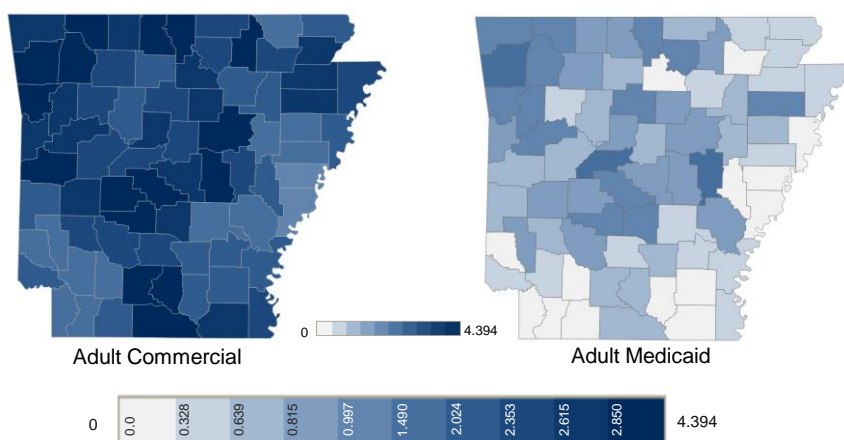


State-Led or State-Supported Interventions with Some Success

- Monitoring
 - Prescription Drug Monitoring Programs
- Drug take-back programs
- Public outreach and education
- Payer engagement strategies



Restricting Access Through Payer Engagement Efforts



Percent of beneficiaries who receive high-dose opioids (adults 19-64, 2016)



Newer, Promising Interventions Underway but Not Fully Deployed

- Physician engagement and education
- Employee assistance programs
- Crisis stabilization units



ACHI

Employee Assistance Programs

Arkansas Employee Assistance Program

[OUR TEAM](#) [EMAIL THE COUNSELOR](#) [RESOURCES/ONLINE ASSISTANCE](#) ▾

EMPLOYEE SERVICES

🏠 [Arkansas Employee Assistance Program](#) > [Services](#) > [Employee Services](#)

Everyone has problems at one time or another. Problems, like people, come in all sizes, types, intensities, and can come at any time. Problems sometimes start small, but can grow and spread to other areas of a person's life, threatening a marriage, a career or both. The Employee Assistance Program (EAP) consultation service provides assessment, short-term counseling, information and referral (if indicated) for employees (including their spouses and dependents) who





ACHI

Crisis Stabilization Units

08.14.2018

Governor Hutchinson Joins National Initiative to Highlight Establishment of Mental Health Crisis Stabilization Units

Governor Visits Arkansas's First Crisis Stabilization Unit to Highlight Impact of State's Recent Efforts to Improve Public Safety



FORT SMITH — When Governor Asa Hutchinson signed Justice Reinvestment legislation last year, he established the nation's first statewide network of specialized treatment facilities so that people with mental illnesses can be diverted from jail. To understand what it is like to be treated at these new facilities, the Governor recently sat down and spoke with a man who has experienced one firsthand.



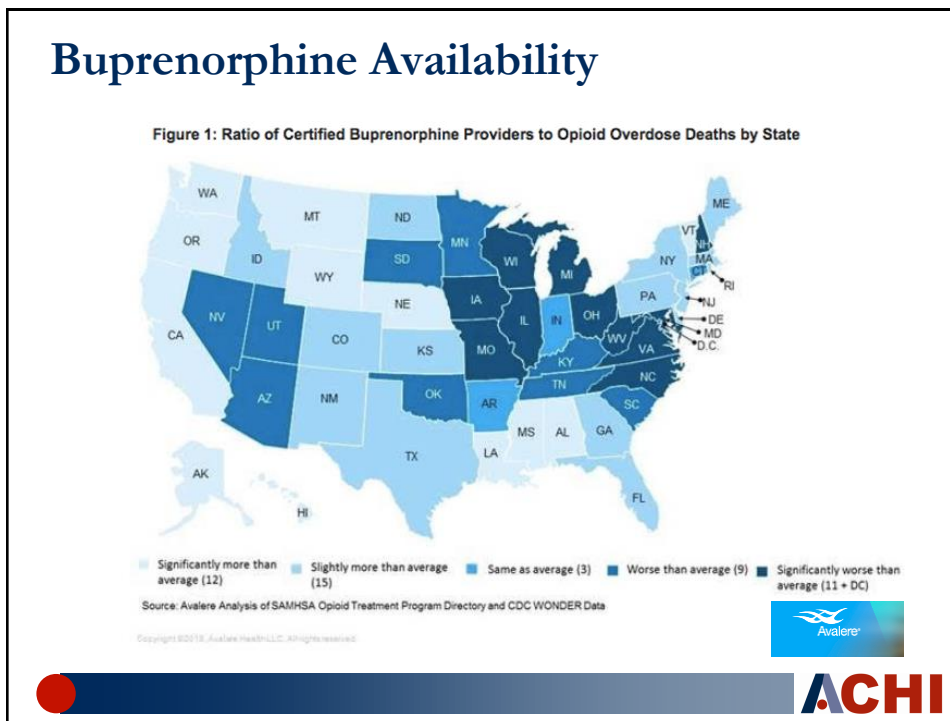
ACHI

Current Gaps, Policy Interventions Still Needed

- Coordination within states across payers
- Coordination between states with prescription drug monitoring programs
- Medicaid coverage challenges
- Buprenorphine availability: Physician "X" waiver administrative barriers



ACHI



Follow ACHI on Social Media



@ACHI_net

@JoeThompsonMD



@ARCenterForHealthImprovement



@ACHI_net



www.ACHI.net

ACHI