



**BROWN**

School of Public Health

# The Corona Virus Pandemic in U.S. Nursing Homes

**Vincent Mor, Ph.D.**

**Florence Grant Pirce Professor of Health Services, Policy & Practice  
Research Scientist, Providence VAMC**

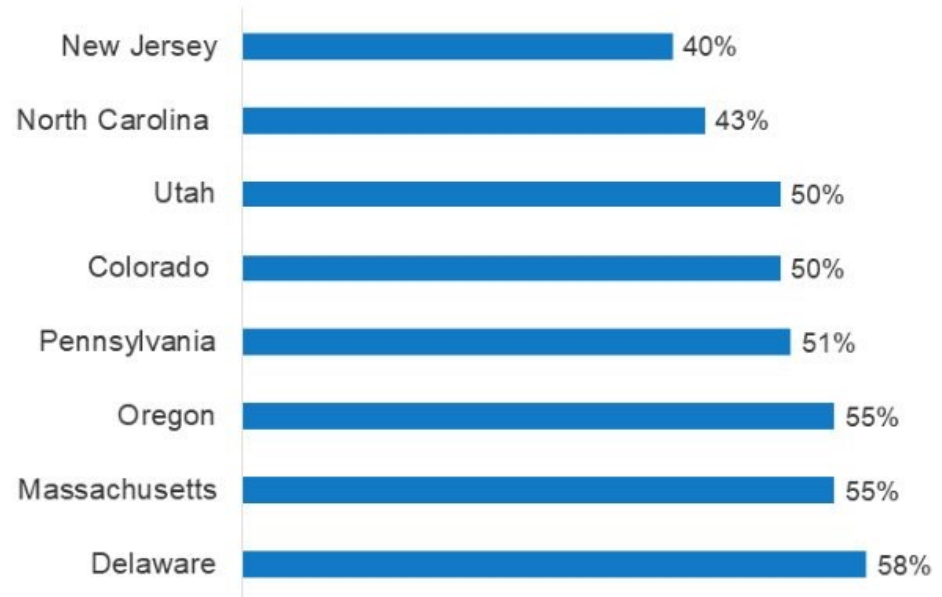


**BROWN**  
School of Public Health

# COVID Fatalities and Nursing Homes

- ~17,000\* reported COVID fatalities
  - \*NY State just identified 1,600 "new" COVID deaths on Monday
- NH residents account for almost one-fourth of all COVID deaths

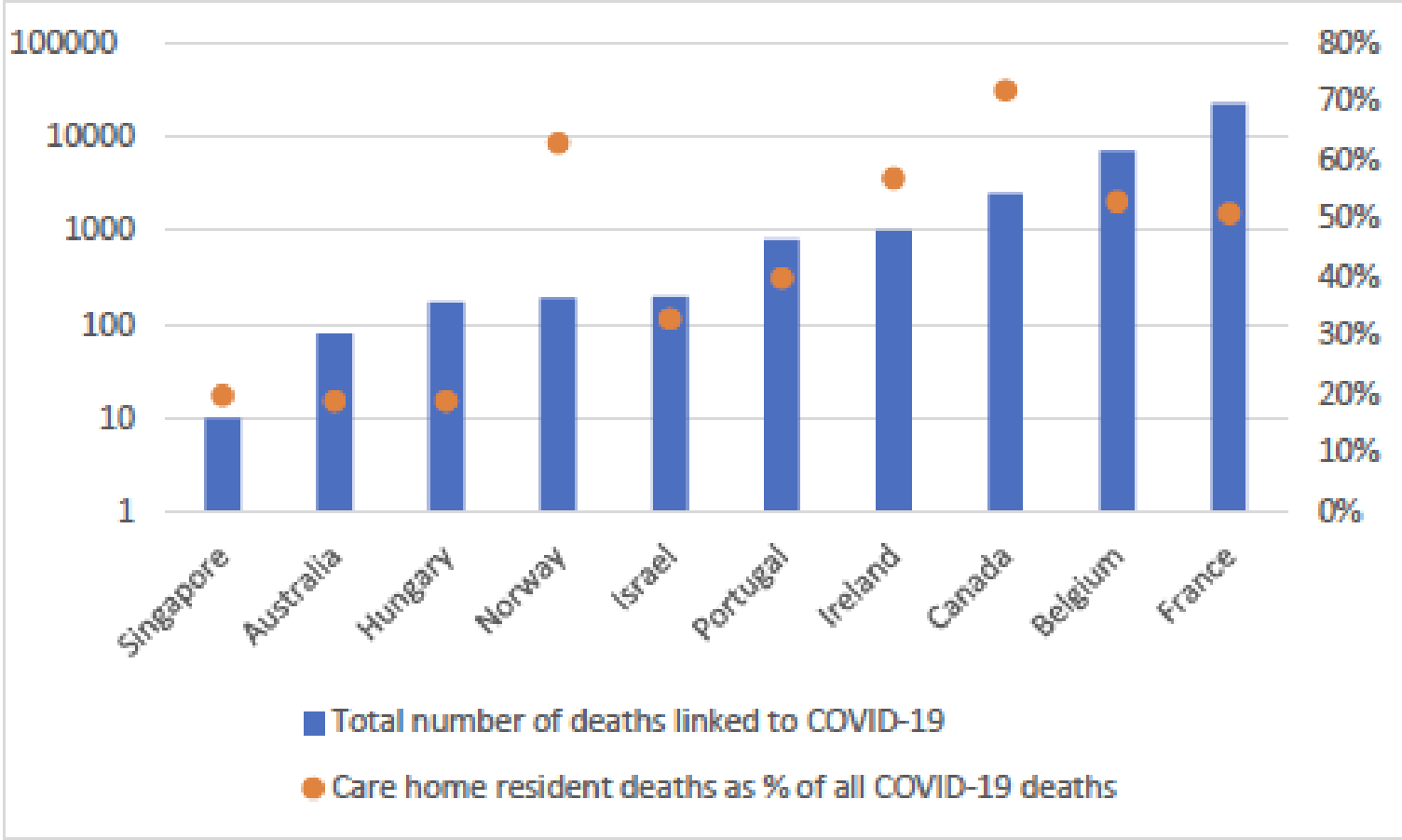
## Share of COVID Deaths in Nursing Homes



Source: Kaiser Family Foundation



# Other Countries Have Similar Share of NH COVID Deaths



# Facility Size & Community Prevalence

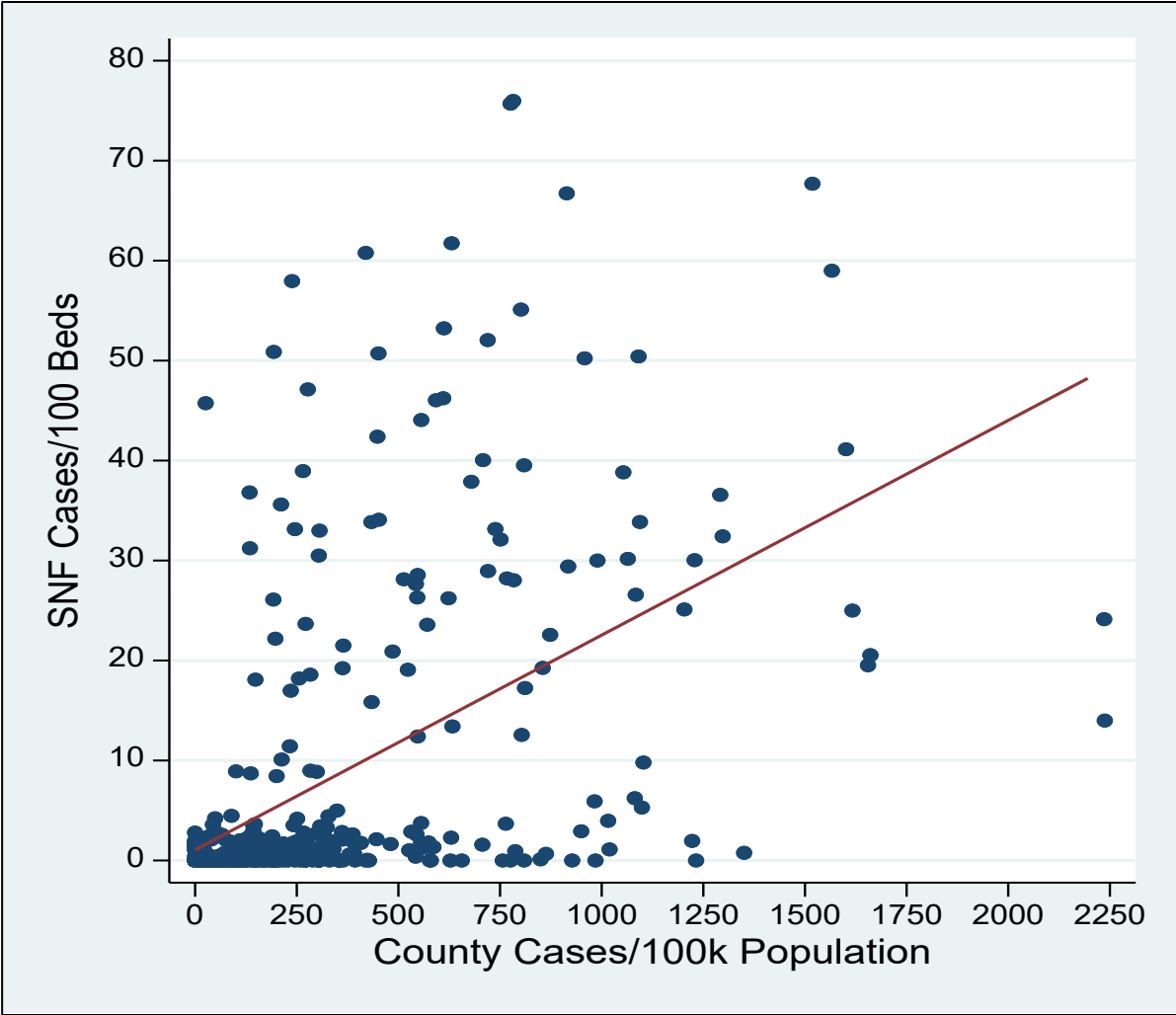
## Predict Likelihood of COVID-19

Characteristic, mean (sd) or no. (%)	COVID+ (n=143)	Not COVID+ (n=197)	p
<u>Facility Characteristics</u>			
Total beds	<b>131.5 (48)</b>	<b>106 (39.7)</b>	<b>&lt;0.001</b>
% Medicare	13.3 (11.5)	14 (11.2)	0.546
Total RN&LPN FTEs/100 beds	24.1 (7.2)	21.6 (6.4)	<0.001
Total CNA FTEs/100 beds	33.8 (7.5)	34 (13.8)	0.855
<u>Resident Characteristics</u>			
Average Age	78.3 (5.1)	76.3 (7.1)	0.005
% Black	16.6 (19.7)	8.7 (13.9)	<0.001
% Dementia	43.2 (15.8)	42.6 (16.3)	0.705
<u>Area (County) Characteristics</u>			
Population density (per 1000)	<b>1459 (1879.6)</b>	<b>616.5 (1066.5)</b>	<b>&lt;0.001</b>
% Black	12.3 (11.8)	7.4 (10.5)	<0.001
% Aged 65 and above	16.3 (2.7)	18 (4.3)	<0.001
No. medical doctors (per 1000)	4 (7)	2.2 (5.5)	<0.001
County COVID+ Cases (per 100,000)	<b>579.2 (445.5)</b>	<b>177.7 (214.9)</b>	<b>&lt;0.001</b>



# Correlation: SNF COVID-19 Counts and Cumulative County Cases: 4/29/2020

*Pearson correlation=0.52;  
Spearman=0.62*



# Additional Results

---

- Regression Analyses reveal staffing levels and quality rankings were either UNRELATED to having a positive case OR negatively related
- Large, urban facilities with more minority residents in counties with many COVID cases are the epicenter



# Summary

---

- Its all about the traffic
  - The bigger the building the more people enter
  - IF, in a county with many cases, more of the traffic will be infected, most asymptomatic
- So, its NOT about the facility but the virus
- Nursing Homes Need
  - Testing
  - PPE
  - Support for staff



# Implications

---

- Most people with positive tests are asymptomatic and remain asymptomatic
- Need to test frequently and ask staff to be very careful off the job
- Protecting the lives of these frail patients is not just a job but a mission. A big sacrifice that must be rewarded.

