



**Saving Lives. Protecting People.**

## **“What’s Preventing Prevention?”**

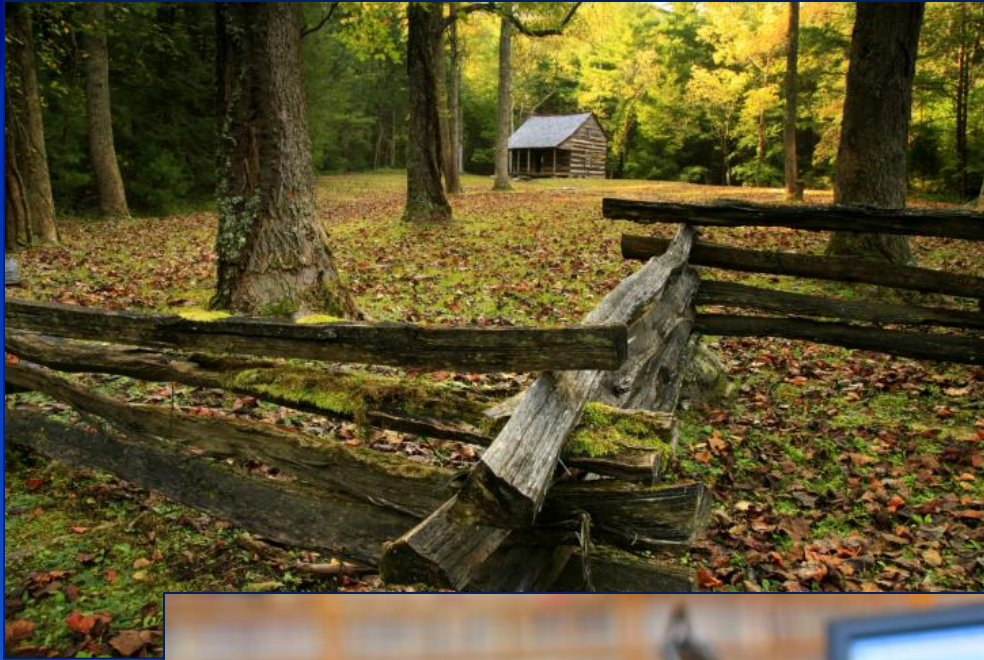
**Judith A. Monroe, MD**

**Director, Office for State, Tribal, Local and Territorial Support  
Deputy Director, Centers for Disease Control and Prevention**

**Congressional Briefing “What’s Preventing Prevention”  
April 17, 2014**



U.S. Department of Health and Human Services  
Centers for Disease Control and Prevention



# CDC Strategic Directions

**Improve health security at home and around the world**



**Better prevent the leading causes of illness, injury, disability, and death**



**Strengthen public health-health care collaboration**



# **WHAT PUBLIC HEALTH BRINGS TO THE TABLE**

# What Public Health Brings to the Table

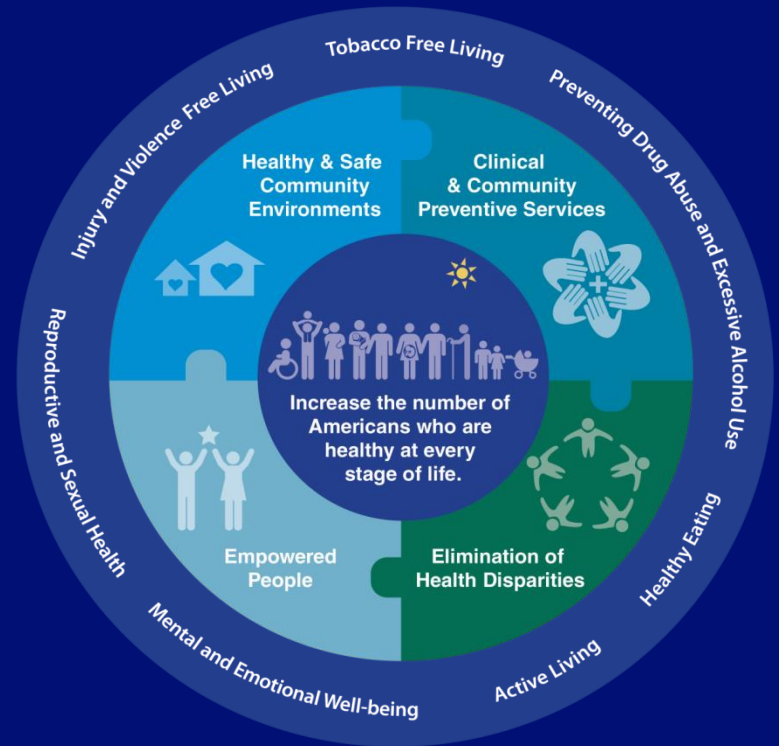
- ❑ Data for decision making
- ❑ Evidence-based health guidelines, recommendations, standards, policy options, strategies, and program models
- ❑ Educates stakeholders across the health system
- ❑ Reduces morbidity and mortality
- ❑ Promotes economic growth and productivity
- ❑ Addresses barriers to accessing public health and clinical care services



# National Prevention Strategy

## The Public Health Vision for Health Reform

Working together to improve the health and quality of life for individuals, families, and communities by moving the nation from a focus on sickness and disease to one based on prevention and wellness.



# Clinical and Community Preventive Services

- ❑ **Effective**
- ❑ **Delivered in communities**
- ❑ **Reinforced by community-based prevention, policies, and programs**
- ❑ **Community programs promote use of clinical preventive services**

Clinical  
& Community  
Preventive Services

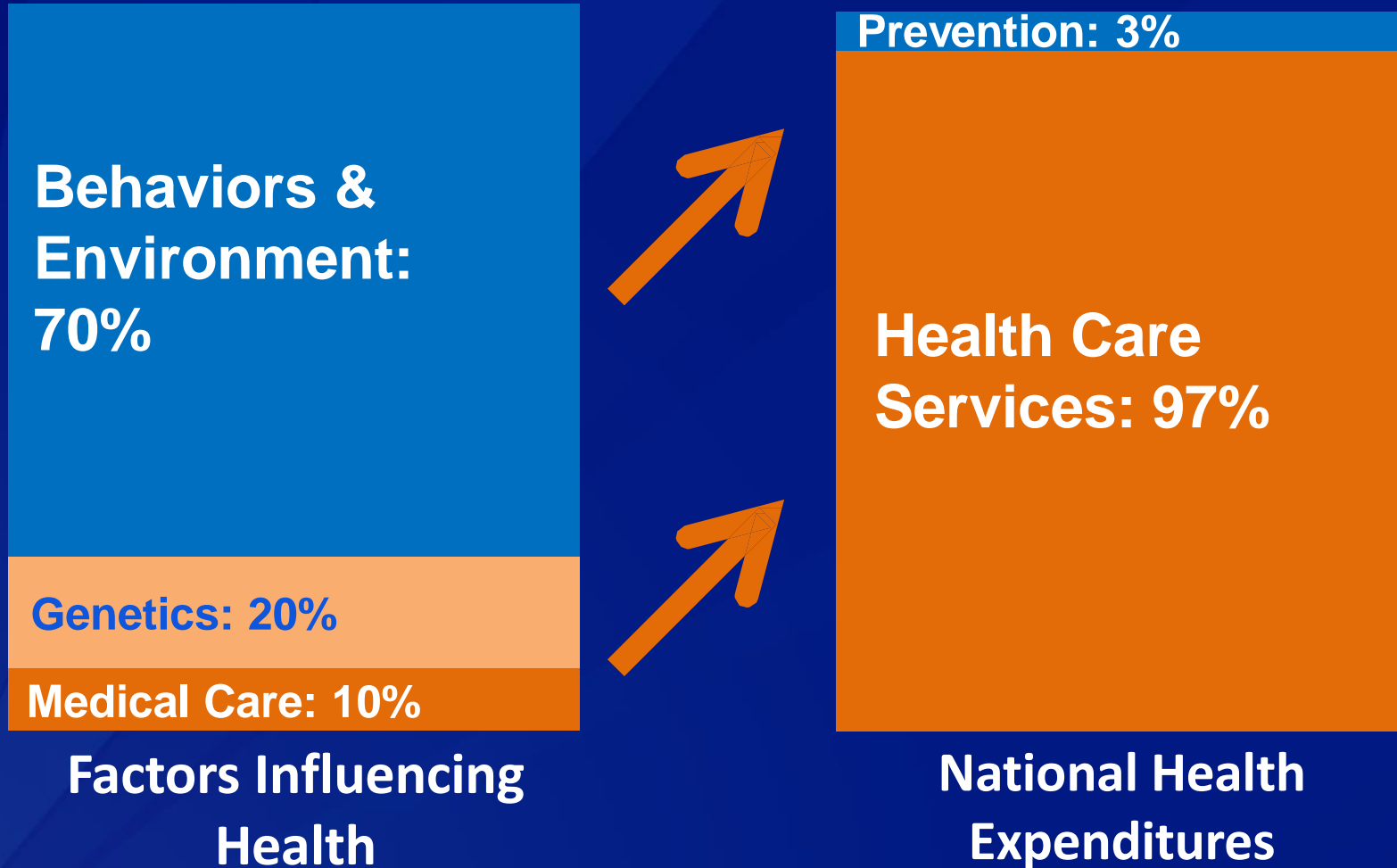


**Prevention is a Best Buy  
for Healthier Communities**





## More Spending, Less Health



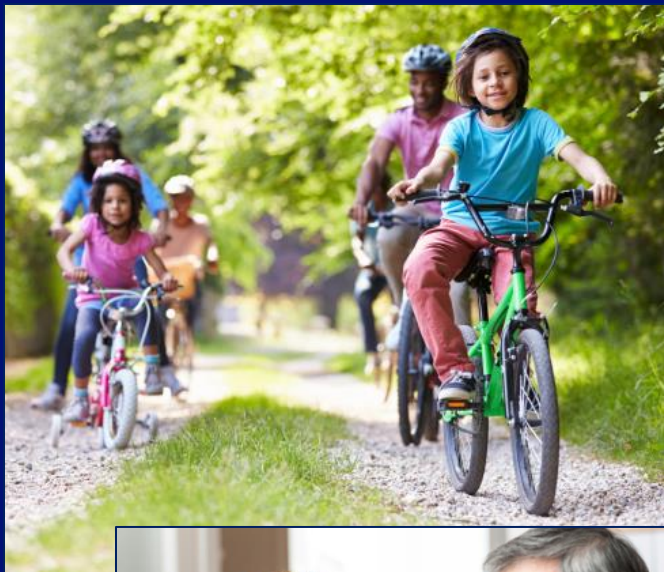
# **Savings Through Prevention**

- ❑ **A \$2.9 billion investment in community-based disease prevention programs was estimated to save \$16.5 billion annually within 5 years.**
- ❑ **Reducing healthcare-associated central line-associated bloodstream infections = \$3.3 billion savings annually**
- ❑ **Preventing motor vehicle crashes = \$99 billion savings in medical and lost work costs annually**
- ❑ **Flu vaccination on-site work programs = savings between \$15 and \$84 per vaccinated person**
- ❑ **Medical costs are reduced over \$3 for every dollar spent on workplace wellness programs**

American Public Health Association. Public Health and Prevention Fund Fact Sheet. [www.apha.org/NR/rdonlyres/3060CA48-35E3-4F57-B1A5-CA1C1102090C/0/APHA\\_PPHF\\_factsheet\\_May2013.pdf](http://www.apha.org/NR/rdonlyres/3060CA48-35E3-4F57-B1A5-CA1C1102090C/0/APHA_PPHF_factsheet_May2013.pdf)

Levi, J. et al. Prevention for a Healthier America: Investments in Disease Prevention Yield Significant Savings, Stronger Communities. Trust for America's Health. Feb. 2009.

# **Savings Through Prevention Did You Know?**



**\$10 per person  
+  
Every year  
+  
In proven, community-based  
public health efforts  
=  
National savings of  $\geq$ \$16 billion  
in  $\leq$ 5 years**

Levi, J. et al. Prevention for a Healthier America: Investments in Disease Prevention Yield Significant Savings, Stronger Communities. Trust for America's Health. Feb. 2009.

# More Effectively Prevent the Leading Causes of Illness, Injury, Disability, and Death

- ❑ Vaccination
- ❑ Immunization
- ❑ Screening
- ❑ Recommendations
- ❑ Guidelines



# Million Hearts: Prevent 1M Heart Attacks and Strokes over 5 Years

## COMMUNITY PREVENTION Reduce need for treatment



**Tobacco  
control**



**Sodium  
reduction**



***Trans* fat  
elimination**

## CLINICAL PREVENTION Improve treatment

**Focus  
on ABCS**



**Health  
information  
technology**

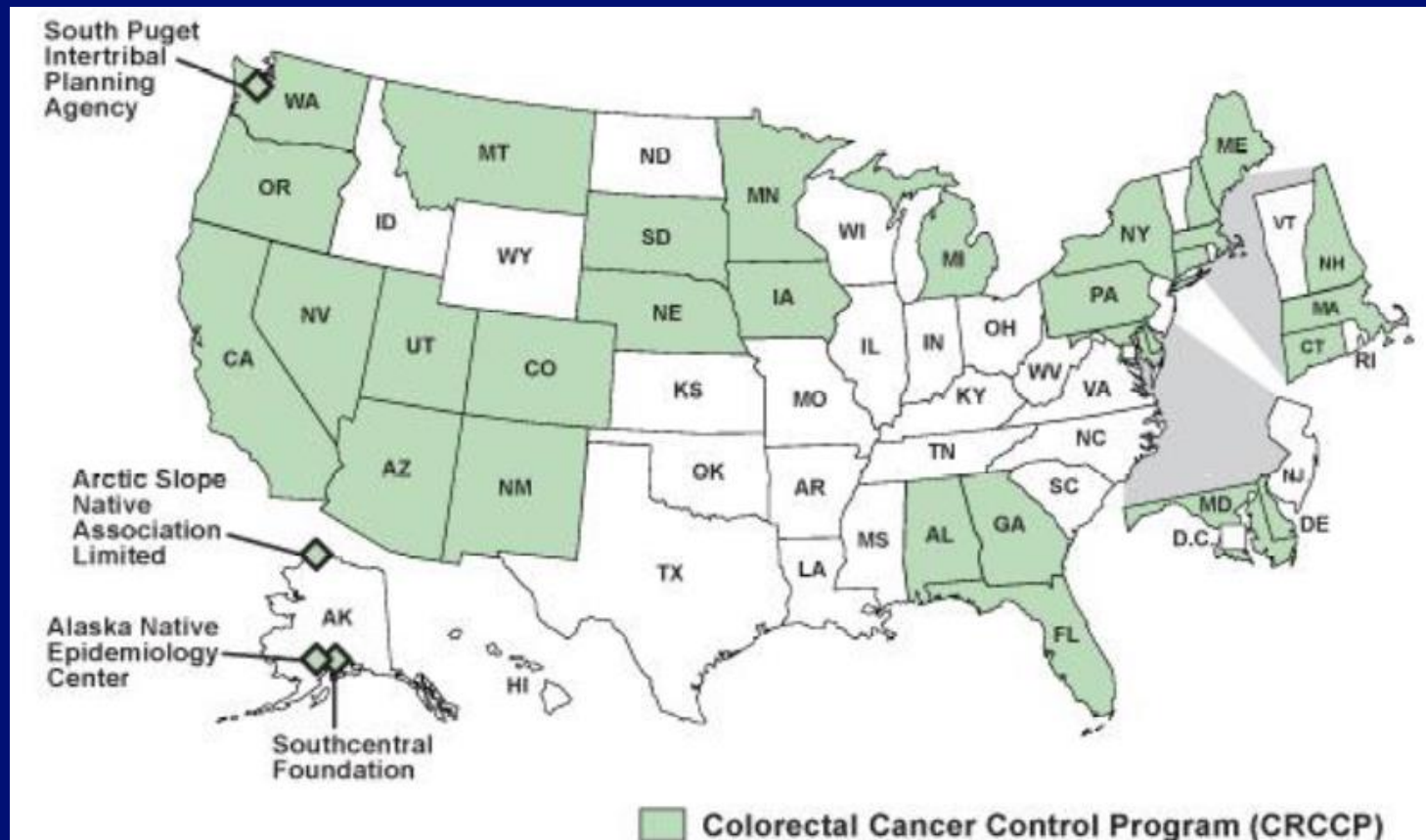


**Clinical  
innovations**





# CDC's Colorectal Cancer Control Program

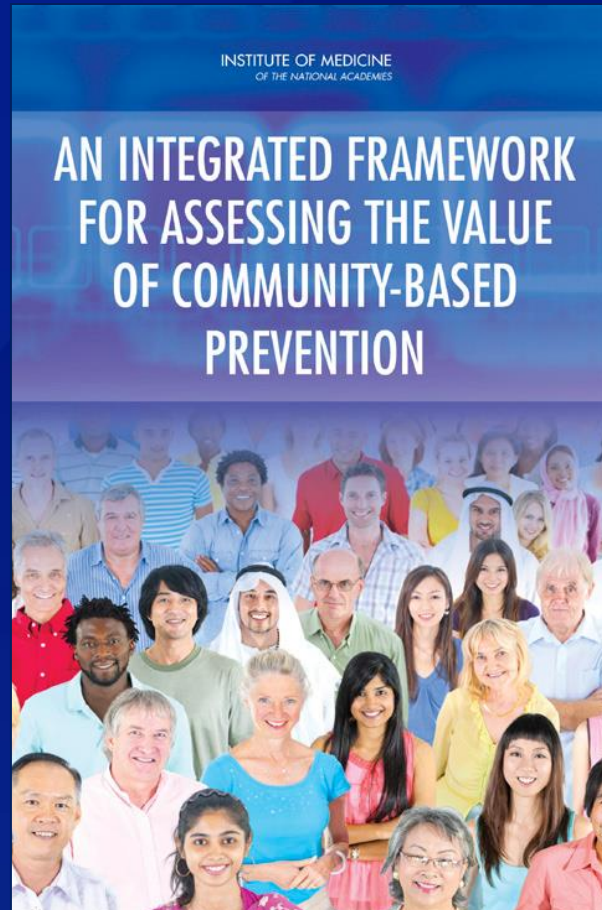


# **Guide to Community Preventive Services ("Community Guide")**

- ❑ Resource that helps users choose evidence-based programs and policies to improve health and prevent disease in communities**

- |                                 |                          |                             |                      |
|---------------------------------|--------------------------|-----------------------------|----------------------|
| ▪ Adolescent Health             | ▪ Cardiovascular Disease | ▪ HIV/AIDS, STIs, Pregnancy | ▪ Physical Activity  |
| ▪ Alcohol—Excessive Consumption | ▪ Diabetes               | ▪ Mental Health             | ▪ Social Environment |
| ▪ Asthma                        | ▪ Emergency Preparedness | ▪ Motor Vehicle Injury      | ▪ Tobacco            |
| ▪ Birth Defects                 | ▪ Health Communication   | ▪ Nutrition                 | ▪ Vaccination        |
| ▪ Cancer                        | ▪ Health Equity          | ▪ Obesity                   | ▪ Violence           |
|                                 |                          | ▪ Oral Health               | ▪ Worksite           |

# An Integrated Framework for Assessing the Value of Community-Based Prevention



Institute of Medicine. An Integrated Framework for Assessing the Value of Community- Based Prevention. 2012.

<http://iom.edu/~media/Files/Report%20Files/2012/Community-Based-Prevention/comm-based-prevention-rb.pdf>

# Thank You!

For more information, please contact CDC's Office for State, Tribal, Local and Territorial Support

4770 Buford Highway NE, Mailstop E-70, Atlanta, GA 30341

Telephone: 1-800-CDC-INFO (232-4636)/TTY: 1-888-232-6348

E-mail: [OSTLTSfeedback@cdc.gov](mailto:OSTLTSfeedback@cdc.gov)

Web: <http://www.cdc.gov/stltpublichealth>

The findings and conclusions in this presentation are those of the authors and do not necessarily represent the official position of the Centers for Disease Control and Prevention.



Centers for Disease Control and Prevention

Office for State, Tribal, Local and Territorial Support