



Dr. Sharon Lewis

Statewide Medical Director
Georgia Department of Corrections

Alliance for Health Reform
Congressional Briefing
August 1, 2014



Georgia Department of Corrections



Demographics

- 9th largest state in overall population
- 5th largest prison population
- ~ 55,000 Offenders in prisons
- ~145,000 Probationers
- 94% male and 6% female
- 62%: age 25-45 years of age (chronologic)
- 50%: > 35 years old
- 120 facilities
 - 31 Prisons
 - Others: County/ Private Prisons, Transitional/ Day Reporting Centers, Probation Detention Centers, Boot Camps
- Constitutionally Mandated Healthcare



Georgia Department of Corrections

Offender Demographics



- 37% of the inmate population has a significant chronic illness
- 17% of the population receives Mental Health services
- Increased acute and chronic disease:
 - * HIV
 - * Hepatitis C
 - * Mental Illness
 - * Cardiac
 - * COPD
 - * Cancer
- Physiologic age > Chronologic age
 - Drug use
 - Life style factors: smoking, alcohol, nutrition, activity
 - Minimal/ No healthcare: medical/ dental/ mental health
 - Accelerated chronic diseases
- Increased Aged, Blind, Disabled (ABD)
- Older age at admission: average 33.2 years of age
- Older age of population: average 36 years of age



Georgia Department of Corrections



FY 2013

>35 years of age = 54% population = 75% claims

>50 years of age = 18% population = 47% claims

>65 years of age = 2% population = 8% claims

➤ 65 years of age average claim cost = \$ 3591

vs.

< 65 years of age average claim cost = \$ 591

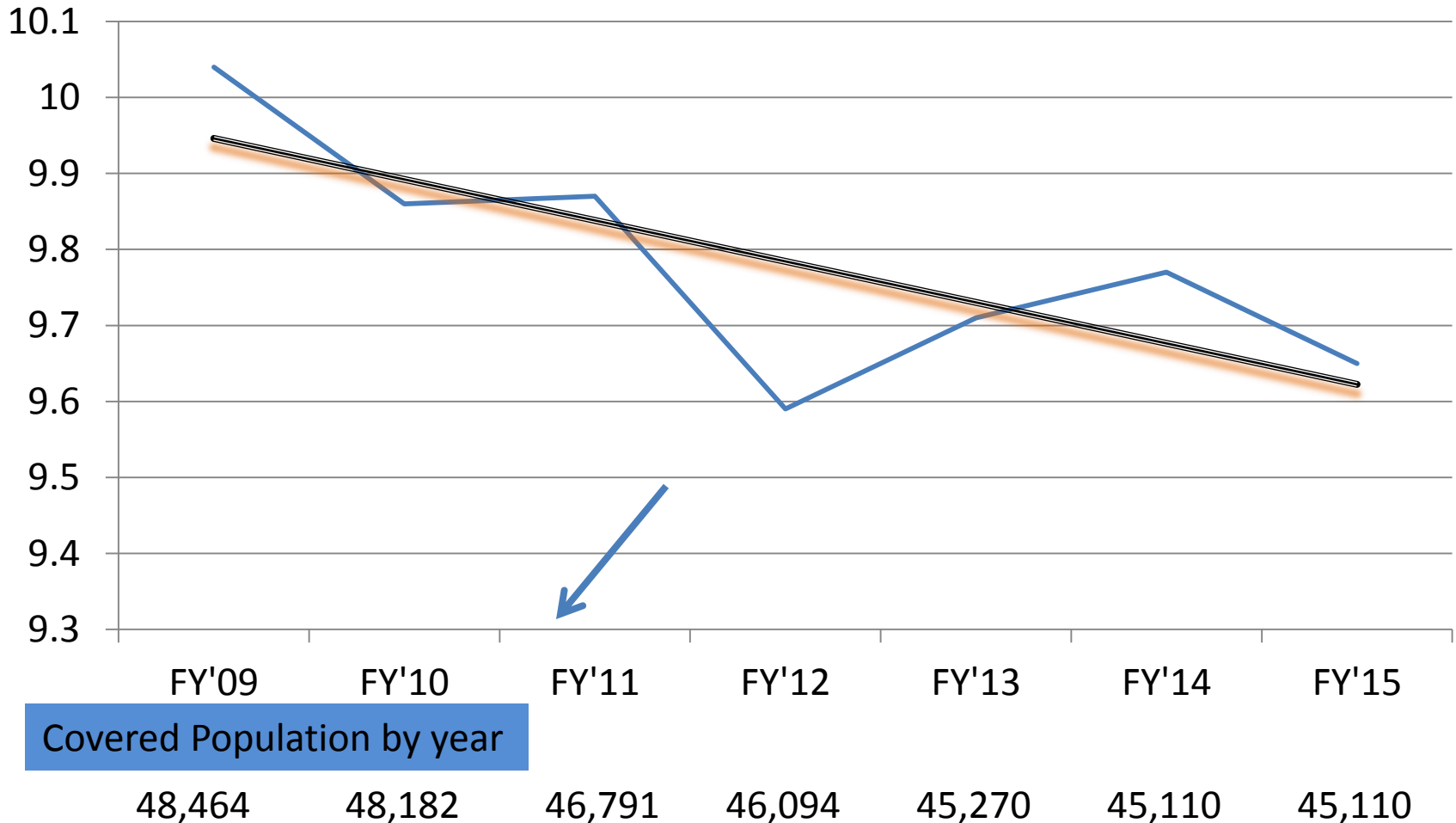


Georgia Department of Corrections



Inmate Health Budget by Year

Budgeted Per Diem





Georgia Department of Corrections



Health Care Operations Overview

- ❖ Summary of Health Care Benefits
 - Reviewed by Office of the Attorney General
 - Provides a framework for “Constitutional Healthcare”
- ❖ Preventive Care
 - Health Assessment
 - Disease State Management (Chronic Illness Clinics)
- ❖ Utilization Management
 - Pre-authorization/Concurrent Review /Discharge Planning
- ❖ Pharmacy Benefits Management
 - P&T Committee
 - Formulary/ Co-pay / 340b pricing purchases
- ❖ Network Management
 - Hospitals / Physicians
 - Ancillary Services: DME, prostheses, PT/OT, rehab
- ❖ Medical Reprieve/ Compassionate Release Process
- ❖ Tele-medicine / Tele-Psych
- ❖ Modular Surgery Unit
- ❖ Hospital Forensic Unit: 22 beds



Georgia Department of Corrections



Challenges

- “Graying” of the inmate population
 - Physical incapacity and immobility
 - Progressive degenerative illnesses
- Increased concentration of chronic illness
- Diminishing funds for healthcare budget
- Increased liability as funding diminishes
- Increased Mental Health needs
 - Dementia / Depression / Psychosis / Disruptive Behavior
 - Cost of psychotropic medications
- Barriers to Re-Entry
 - Transition of medical care to appropriate providers
 - Vocational certification and employment opportunities
 - Residence restrictions



Georgia Department of Corrections



Recommendations

- 340b pricing availability for Departments of Corrections
- Establish Guidelines for Potential Impact on Departments of Corrections regarding the Affordable Care Act
- Electronic Health Record Exchange
- Expand Federal Funding Participation for Inmate Eligibility