

# The ACA Medicaid Expansion: Effects on Coverage and Access

Sara Collins, Ph.D.

Vice President, Health Care Coverage and Access

Alliance for Health Reform Briefing: Medicaid Moving Forward

April 3, 2017

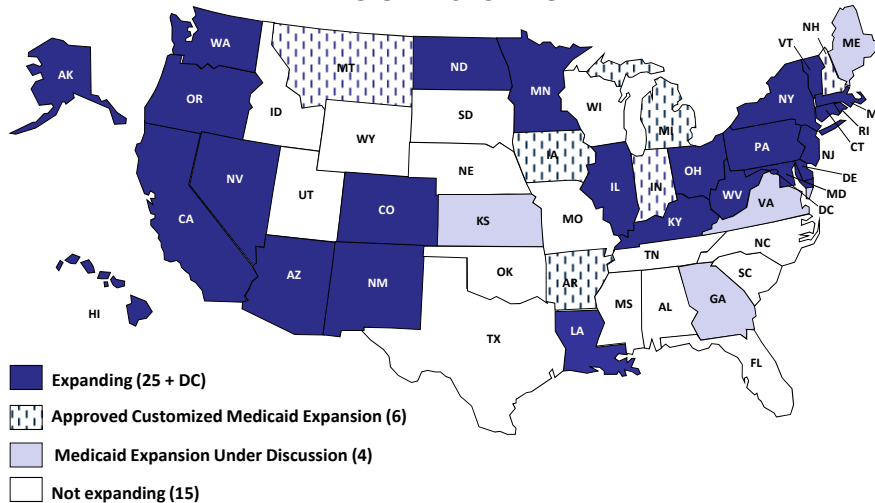


The  
**COMMONWEALTH  
FUND**

Affordable, quality health care. For everyone.

Exhibit 1

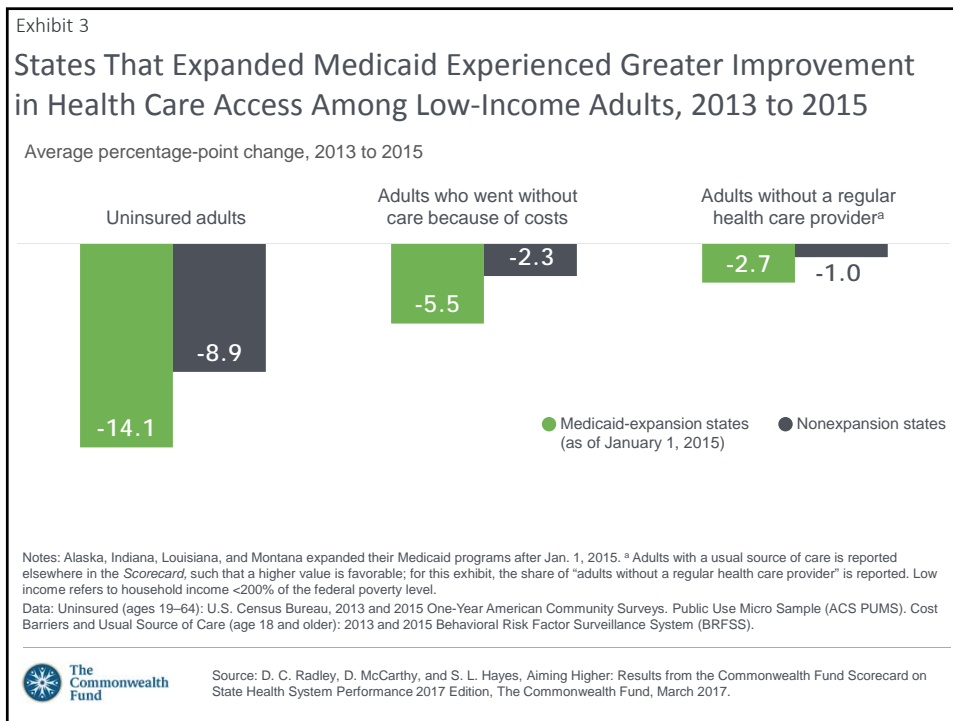
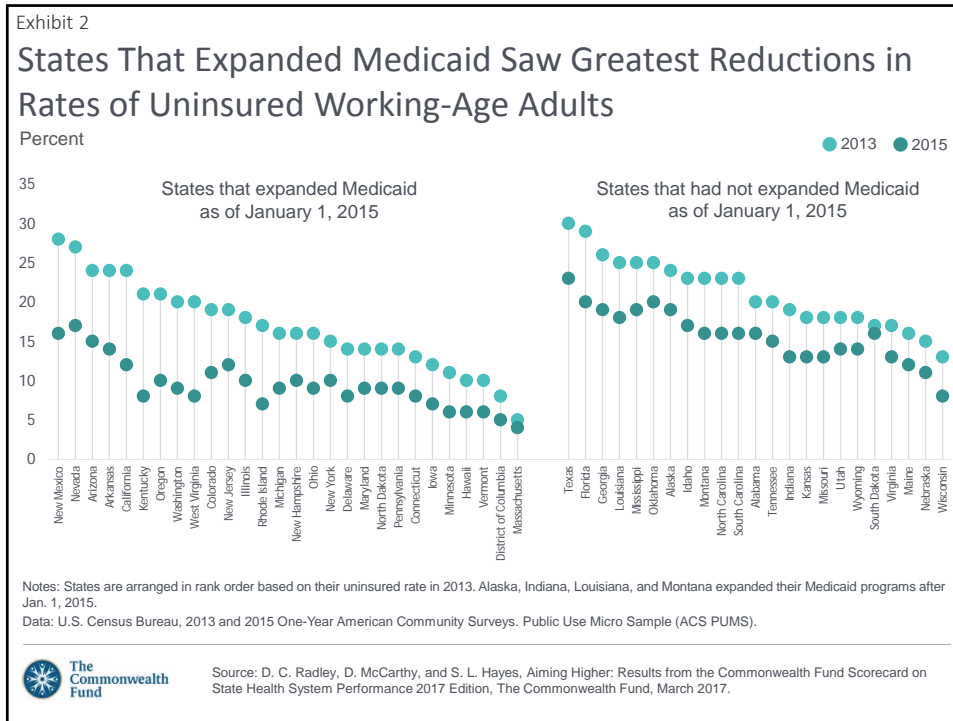
## Status of State Participation in Medicaid Expansion, As of March 2017

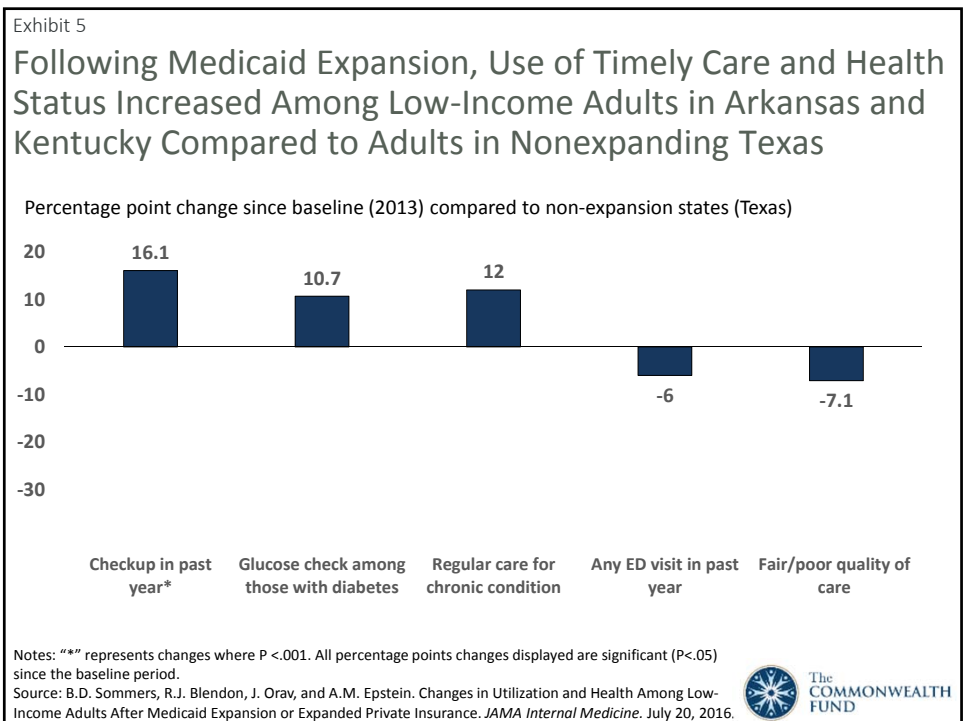
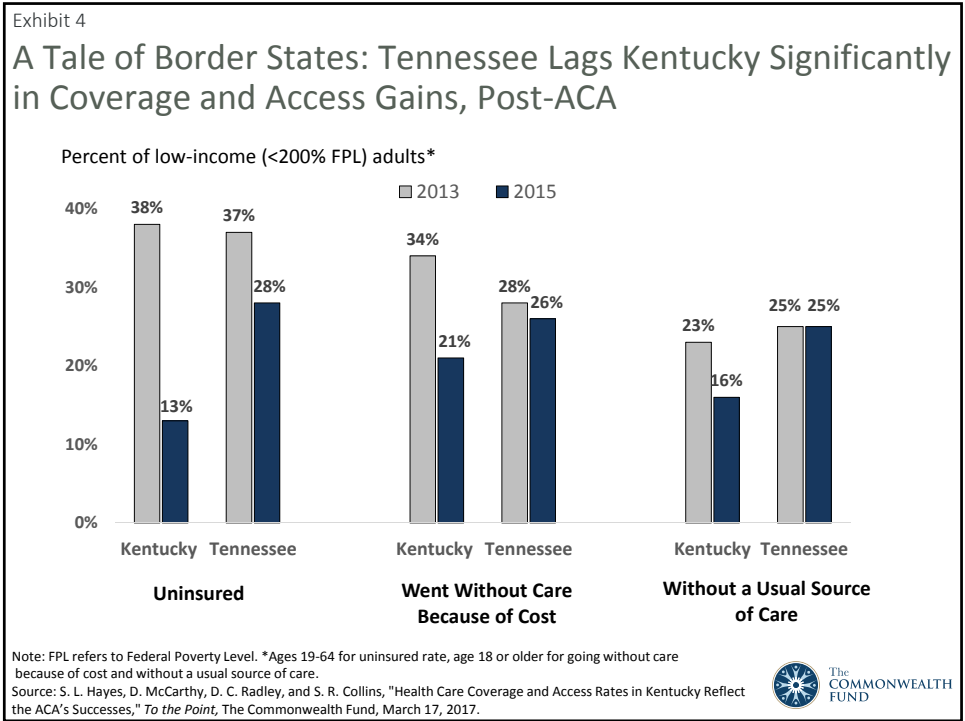


\*Adults in Wisconsin are eligible for Medicaid up to 100% of federal poverty.  
Notes: CMS has approved waivers for expansion with variation in Arkansas, Indiana, Iowa, Michigan, Montana, New Hampshire, and Pennsylvania. Pennsylvania has transitioned from its customized Medicaid expansion program, "Healthy Pennsylvania," to traditional Medicaid expansion.



The  
**COMMONWEALTH  
FUND**





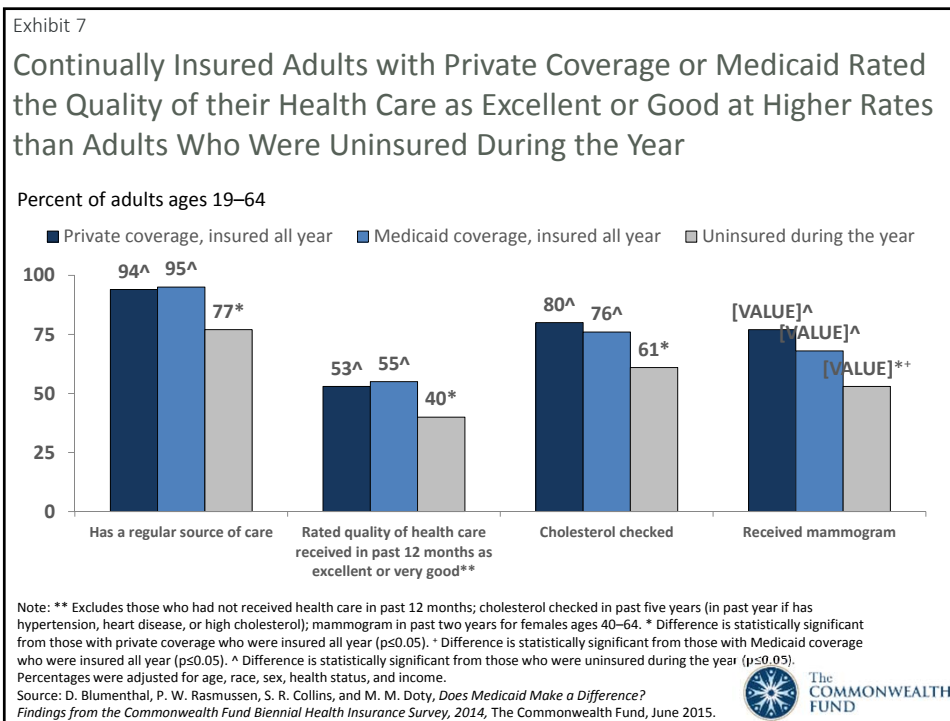
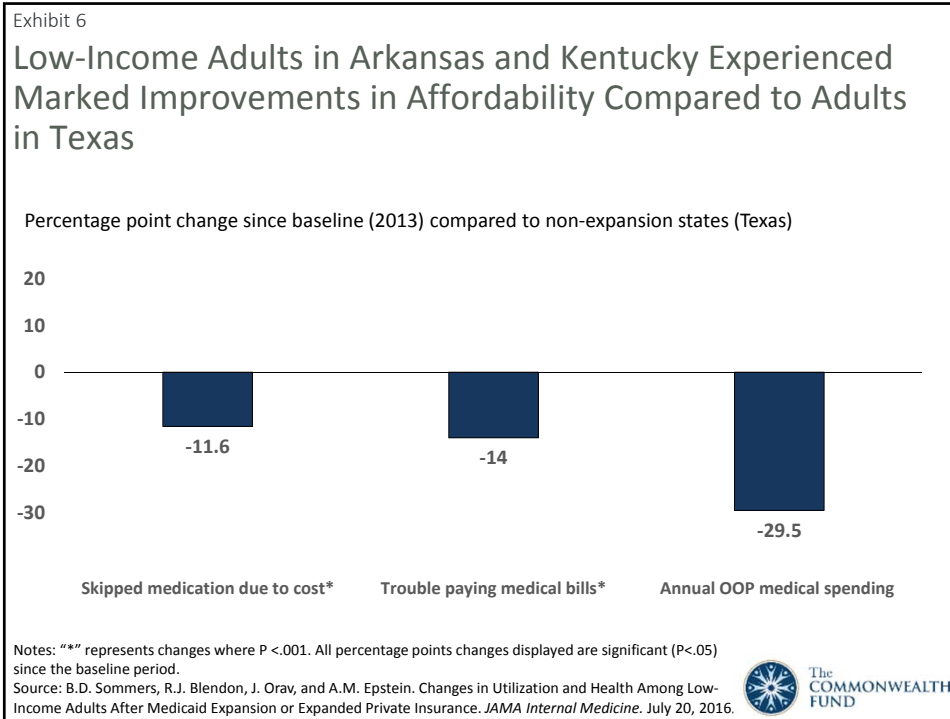


Exhibit 8

## Looking Forward

- CBO estimates that by 2026, 71 million people will be enrolled in Medicaid, 15 million through the ACA expansion.
- Will more states move forward on expansion this year?
  - GA, KS, ME, VA
- Will CMS enable greater flexibility for states through 1115 waivers and what will be the implications for Medicaid enrollees?
- Will Congress return to block grants and per capita caps?

