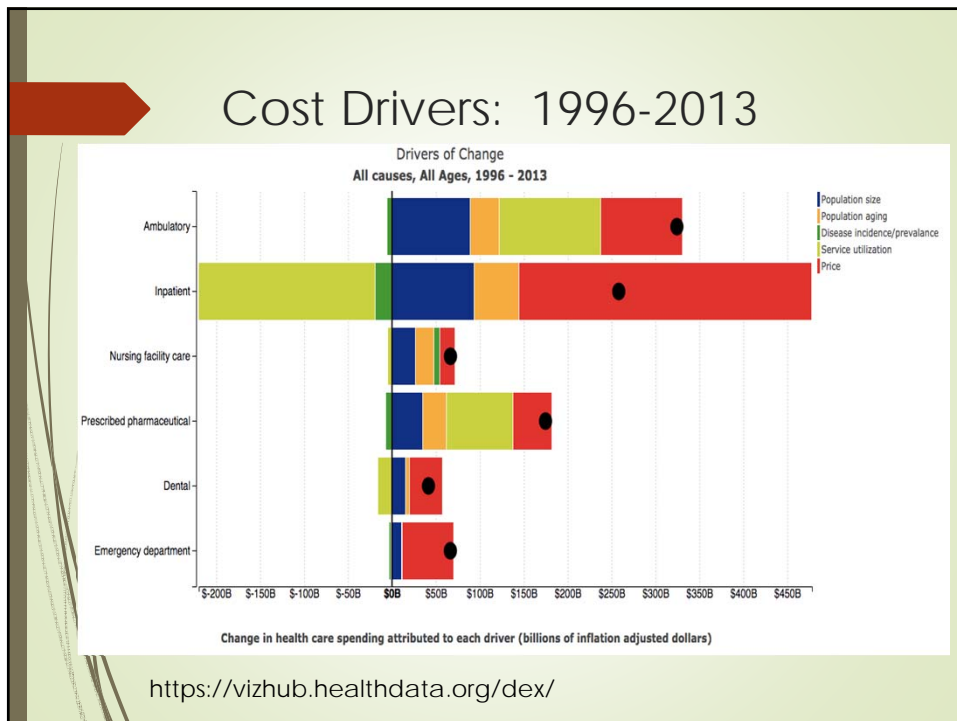


# Cost and Care: Insights from Oregon's Health Care Reform Journey


Glenn S. Rodriguez, MD  
June 29, 2018



## Oregon Health Care Reform Journey: Real World Tests of Change

- 1994: Original Oregon Health Plan 1115 Medicaid Waiver approved
  - Prioritized benefit list / managed care organizations
- 2009: Oregon Patient Centered Medical Home Program established
- 2012: Renewal of 115 Medicaid waiver approved
  - Expanded coverage to 436,000 additional Oregonians
  - Established the Coordinated Care Organization (CCO) model of care
  - Global budgets with responsibility for physical, mental and oral health services
  - Committed to < 3.4% annual rate increase
- OHSU evaluation:
  - Reduction in spending growth
  - Improvement in experience of care, self reported health status, and some quality domains

<https://www.oregon.gov/oha/HPA/ANALYTICS/Evaluation%20docs/Summary%20Medicaid%20Waiver%20Evaluation%20-%20Final%20Report.pdf>



## Oregon Patient-Centered Primary Care Home (PCPCH) Program

**ACCESS TO CARE**  
*Be there when I need you*

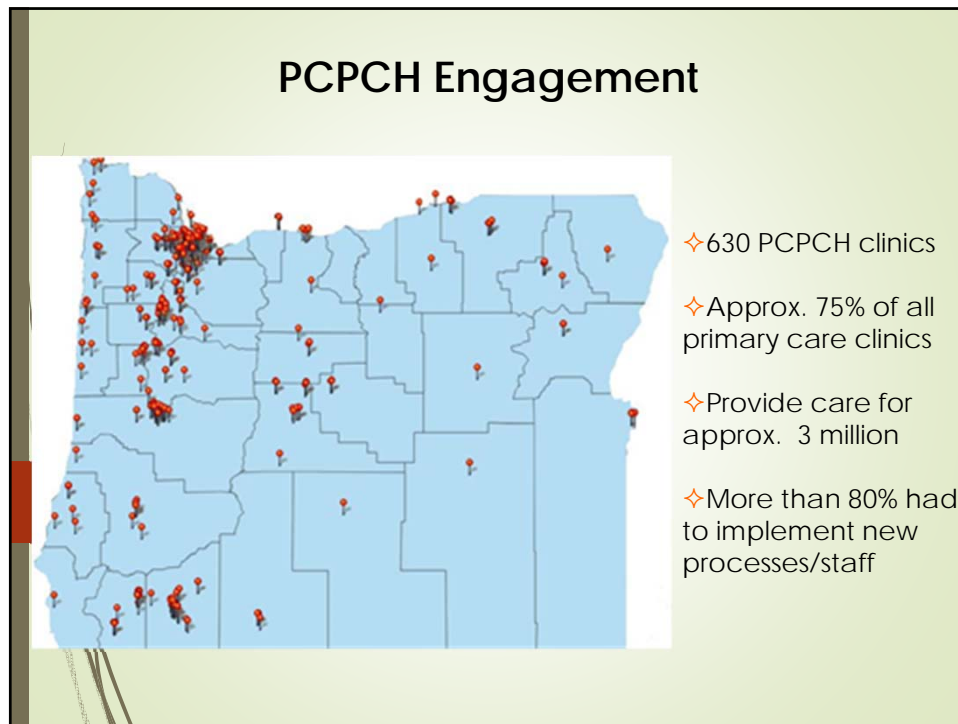
**ACCOUNTABILITY**  
*Take responsibility for making sure I receive the best possible health care*

**COMPREHENSIVE WHOLE PERSON CARE**  
*Provide or help me get the health care and services I need*

**CONTINUITY**  
*Be my partner over time in caring for my health*

**COORDINATION AND INTEGRATION**  
*Help me navigate the health care system to get the care I need in a safe and timely way*

**PERSON AND FAMILY CENTERED CARE**  
*Recognize that I am the most important member of my care team – and that I am ultimately responsible for my overall health and wellness*



## PCPCH Evaluation – does it work?

**Return on Investment**

- Every **\$1 increase** in primary care spending = **\$13 in savings**
- PCPCH program implementation has resulted in **\$240 million in savings** to Oregon's health system between 2012 and 2014
- PCPCH-recognized 3 years lowers cost of care **\$28 PMPM** which is double the overall average for all PCPCH clinics

**Clinics Mature in the Model**

- Savings in specialty, emergency, and inpatient care costs more than doubled in 3<sup>rd</sup> year of PCPCH recognition compared to overall average

**The Whole is Greater Than the Sum of Its Parts**

- Cumulative effect of the PCPCH attributes has more impact on cost & utilization than any independent effects of the attributes

Gelmon, S., et al (2016) *Implementation of Oregon's PCPCH Program*, <http://www.oregon.gov/oha/HPA/CSL-PCPCH/Documents/PCPCH-Program-Implementation-Report-Sept2016.pdf>