

Dr. ALFIEE  
love. light. science.

Centering Patients in  
Comparative  
Effectiveness Research  
(How It's Done)

THE AAKOMA PROJECT

Dr. Alfiee

Alfice M. Breland-Noble, Ph.D. MHSc.  
Director, The AAKOMA Project and  
Center, PLLC  
April 17, 2019



love. light. science.

THE AAKOMA PROJECT

The AAKOMA Project  
Embrace, Encourage, Enlighten

THE AFRICAN AMERICAN KNOWLEDGE OPTIMIZED FOR  
MINDFULLY HEALTHY ADOLESCENTS PROJECT -


OUR MISSION: TO ADDRESS DEPRESSION & OTHER  
MENTAL HEALTH NEEDS OF AFRICAN AMERICAN YOUTH  
AND OTHER YOUTH OF COLOR

We do this through the development and implementation  
of rigorous, culturally relevant, patient centered,  
community-engaged research and clinical care

love. light. science.


Through the use of Community Based Participatory Research (CBPR) and traditional behavioral clinical trials we develop culturally relevant interventions that inform:

1. The public about the unique mental health needs of African American and racially diverse youth (especially in the areas of depression and treatment engagement)
2. The mental health field about the unique perspectives of African American and racially diverse families regarding depression, treatment engagement and mental health disparities.




PLEASE ONLY CITE WITH PERMISSION

love. light. science.

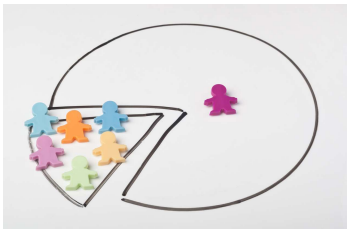


PLEASE ONLY CITE WITH PERMISSION




love. light. science.

## Barriers to Care




Generally, mental health disparities for people of color exist in four areas:

1. Decreased access to/less availability of mental health services -  
Includes issues with costs; insurance; availability of clinics and hospitals esp. for mental health concerns.
2. Lower likelihood of receiving required services -  
As a result of abovementioned reasons; cultural stigma; failure to acknowledge mental health needs.
3. Experiences with poorer quality of care -  
Lack of cultural competence of providers and treatments; provider bias.
4. Underrepresentation in the field of mental health research:  
Both in the role of participant and **researcher.**

PLEASE ONLY CITE WITH PERMISSION



love. light. science.

## Improving the Status Quo

How can we improve provision of care and diminish the service provision gap across racial groups?

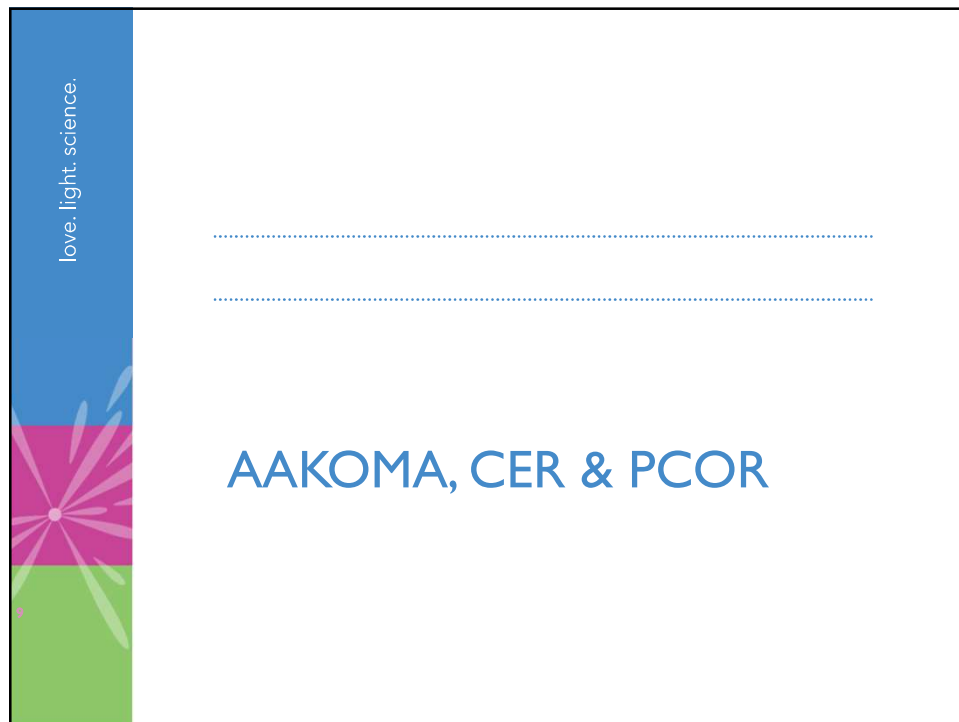
Direct examination of current levels of knowledge and attitudes of youth of color surrounding the field of mental health may inform better practices.

Means of reducing barriers to care and research involvement:

- Cultural competence
- Developing alternate and innovative forms of tx to improve access and availability
- Promoting mental health awareness
- Community collaboration

*PCOR, CER, CBPR*

PLEASE ONLY CITE WITH PERMISSION




love. light. science.

## Objectives of our Research

1. For participants to understand the details of Comparative Effectiveness Research and Patient Centered Outcomes Research.
2. For participants to learn about the general knowledge and attitudes of youth of color surrounding the field of mental health treatment and research.
3. For participants to understand and be able to apply the tenets of CER and PCOR in similar communities to increase mental health research engagement.

PLEASE ONLY CITE WITH PERMISSION




love. light. science.

## Engaging Black Faith Communities to Address Mental Health Disparities via Curriculum Development

Goals of our Funded EA Project:

1. Build a network of African American youth patients, leaders, caregivers, parents, community members and other stakeholders invested in developing skills in PCOR and CBPR.
2. To evaluate and identify:
  - a) Factors that help or hinder **Faith Based Mental Health Promotion**
  - b) Factors necessary to support training in PCOR and CER
3. To collaboratively develop a patient and stakeholder focused training curriculum in PCOR, CER, and CBPR for African American youth mental health.

PLEASE ONLY CITE WITH PERMISSION




love. light. science.

## EA Project: Accomplishments

- ~ Engaged **15 faith communities** across the project period to create our stakeholder network.
- ~ Recruited a total of **203 individuals** to participate in survey completion and group discussion (with 17 focus groups completed).
- ~ Primary Outcomes:
  - Curriculum Creation
  - Capacity Building
  - Community and Patient Engagement

PLEASE ONLY CITE WITH PERMISSION

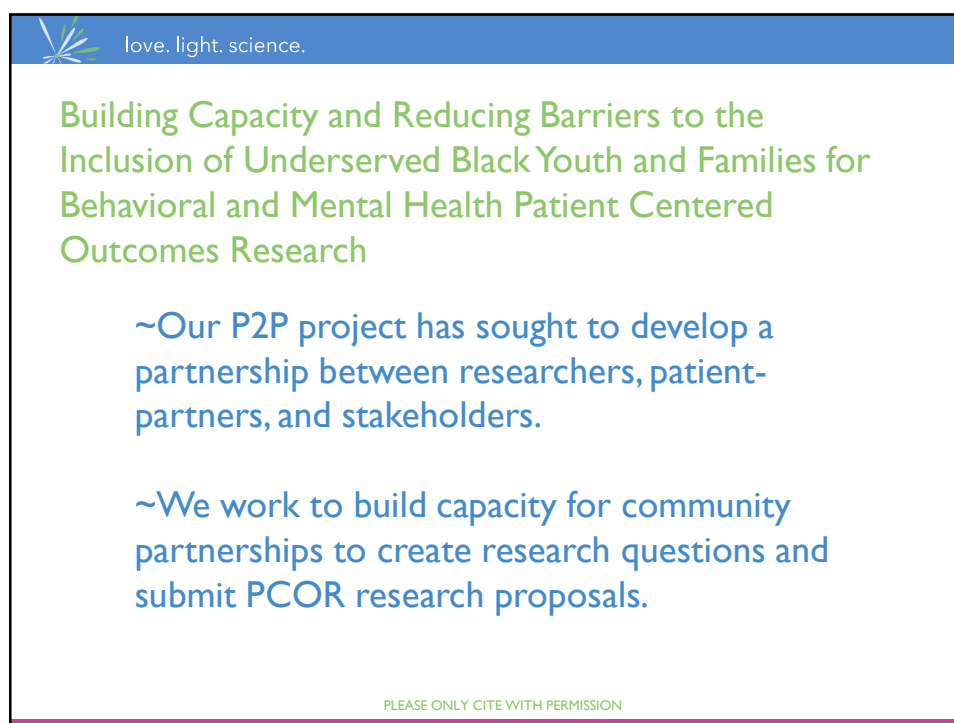
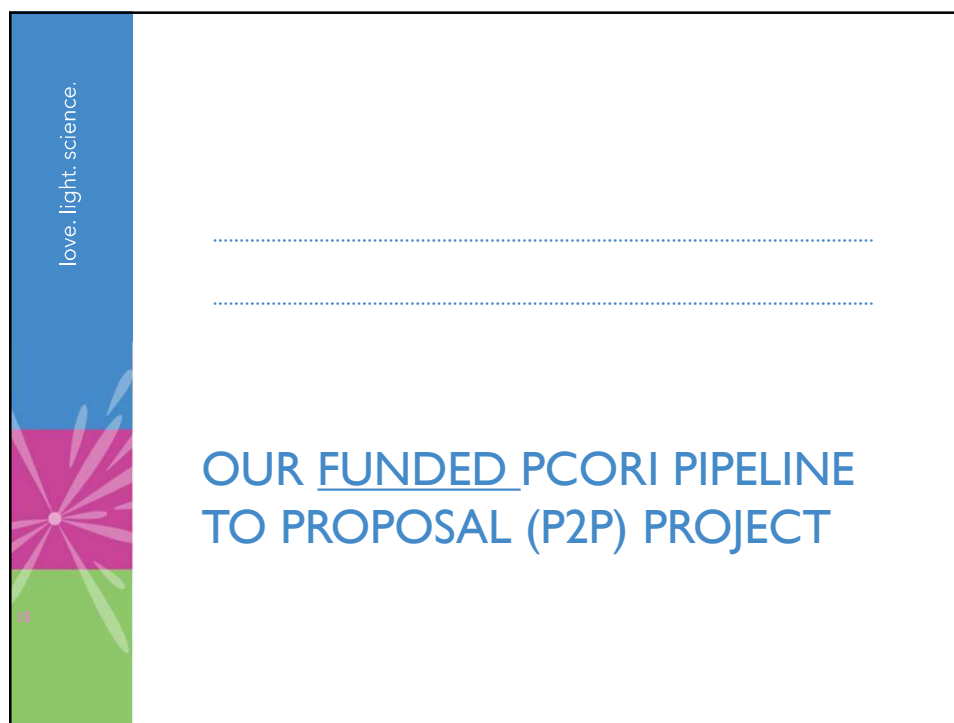


love. light. science.

## Adult's Understanding of CER and PCOR

## Youth's Understanding of CER and PCOR

PLEASE ONLY CITE WITH PERMISSION





love. light. science.

## P2P Project Goals

1. Strengthen relationships between researchers, patients and stakeholders.
2. Build capacity for community partnerships to create research questions and submit PCOR research proposals.
3. Engage partnerships in research process and development of dissemination and implementation plans.
4. Successfully establish an infrastructure for patients, caregivers, and other stakeholders to increase engagement in research, dissemination and evaluation.

PLEASE ONLY CITE WITH PERMISSION

love. light. science.

## Tiers of our P2P Project

```

graph LR
    T1[Tier 1 - COMPLETE] --> T2[Tier 2 - COMPLETE]
    T2 --> T3[Tier 3 - COMPLETE]
    T3 --> F[PCORI Funding Announcement]
  
```

**Tier 1 - COMPLETE**

- 9 months
- Build a sense of community.
- Develop a network.
- Establish community trust.
- Identify recruitment strategies.
- Develop CER\* ideas.

**Tier 2 - COMPLETE**

- 12 months
- Lay groundwork for proposal.
- Complete all PCORI trainings.
- Develop a workplan.
- Identify potential community partners.
- Develop CER questions.
- Identify other sources of funding.

**Tier 3 - COMPLETE**


- 12 months
- Write funding proposal based on CER questions.
- Present to the community CER questions.
- Expand community partner networks.
- Submit letter of intent of funding.

**PCORI Funding Announcement**

- Funding decision announced.
- This funding and approval will permit implementation of the intervention with Black youth
- Implement Intervention!

\*CER- Comparative Effectiveness Research is the direct comparison of existing health care interventions to determine which work best for which patients and which pose the greatest benefits and harms

PLEASE ONLY CITE WITH PERMISSION


love. light. science.

## P2P Project: CER Question Development

With our team, we developed CER questions with our community and patient partners that addressed:

- 1.The need for a trauma based treatment intervention for youth members of their geographic community.
- 2.The needs and current resources of this population.
- 3.The community's **cultural sensitivities** was of importance to the group.

PLEASE ONLY CITE WITH PERMISSION

love. light. science.

## P2P PROJECT: CURRENT STATUS





March 2018 → Letter of Intent ACCEPTED

Spring 2018 → Addressing Disparities Grant SUBMITTED

INITIAL SCORE:

**41**

STRONG WITH MINOR WEAKNESSES





love. light. science.

## FUTURE RESEARCH



- Additional factors that may prevent youth of color from engaging in mental health research and clinical care
- Efficacy and effectiveness of culturally adapted outpatient psychotherapy
- Best practices for encouraging engagement of this population and among other youth of color
- Culturally relevant predictors of treatment effectiveness
- How to tailor interventions to the needs and wishes of patients of color



love. light. science.

## REFERENCES

- Avenevoli, S., Swendsen, J., He, J. P., Burstein, M., & Merikangas, K. R. (2015). Major depression in the National Comorbidity Survey-Adolescent Supplement: Prevalence, correlates, and treatment. *Journal of American Academy of Child & Adolescent Psychiatry*, 54(1), 37-44. doi:10.1016/j.jaac.2014.10.010
- Breland-Noble, A. M. (2015). Depressive Disorders in African American Youth: Historical Concerns, Current Knowledge and Future Directions. In A. M. Breland-Noble, C. Al-Mateen, & N. Singh (Eds.), *Handbook of Mental Health in African American Youth*. New York, NY: Springer.
- Breland-Noble, A. M., Al-Mateen, C., & Singh, N. (2016). *Handbook of Mental Health in African American Youth*. Switzerland: Springer.
- Breland-Noble, A. M., Bell, C. C., Burris, A., & AAKOMA Project Adult Advisory Board. (2011). "Mama just won't accept this": Adult perspectives on engaging depressed African American teens in clinical research and treatment. *Journal of Clinical Psychology in Medical Settings*, 18(3), 225-234. doi:10.1007/s10880-011-9235-6
- Breland-Noble, A. M., & Board, A. P. A. (2012). Community and treatment engagement for depressed African American youth: the AAKOMA FLOA pilot. *J Clin Psychol Med Settings*, 19(1), 41-48. doi:10.1007/s10880-011-9281-0
- Breland-Noble, A. M., Wong, M. J., Childers, T., Hankerson, S., & Sotomayor, J. (2015). Spirituality and religious coping in African-American youth with depressive illness. *Mental Health, Religion & Culture*, 18(5), 330-341. doi:10.1080/13674676.2015.1056120
- Breland-Noble, A. M., Wong, M. J., Harding, C., & Carter-Williams, M. (2014). *Faith Based Mental Health Promotion for African Americans*. Paper presented at the Minority Health and Health Disparities Grantees' Conference: Transdisciplinary Collaborations: Evolving Dimensions of US and Global Health Equity. National Harbor, MD.
- Cameron, P., Pond, G. X., Ellis, P., & Goffin, J. (2013). A comparison of patient knowledge of clinical trials and trialist priorities. *Current Oncology*, 20(3), e193-e205.
- Hacker, K., Arsenault, L., Franco, I., Shaligram, D., Sidor, M., Olsson, M., & Goldstein, J. (2014). Referral and follow-up after mental health screening in commercially insured adolescents. *Journal of Adolescent Health*, 55(1), 17-23. doi:10.1016/j.jadohealth.2013.12.012
- Holmes, P., Corrigan, P., Williams, P., Canar, J., & Kubiak, M. (1999). Changing attitudes about schizophrenia. *Schizophrenia Bulletin*, 25, 447-456.
- Huey Jr., S. J., & Polo, A. J. (2010). Assessing the Effects of Evidence-Based Psychotherapies with Ethnic Minority Youths. In J. R. Weisz & A. E. Kazdin (Eds.), *Evidence-based psychotherapies for children and adolescents*. Greensboro, NC: Guilford Press.
- Huey, S. J., Tilley, J. L., Jones, E. O., & Smith, C. A. (2014). The Contribution of Cultural Competence to Evidence-Based Care for Ethnically Diverse Populations. *Annual Review of Clinical Psychology*, Vol 10, 10, 305-338. doi:10.1146/annurev-clinpsy-032813-153729
- Jimenez, D. E., Cook, B., Bartels, S. J., & Alegria, M. (2013). Disparities in mental health service use of racial and ethnic minority elderly adults. *J Am Geriatr Soc*, 61(1), 18-25. doi:10.1111/jgs.12063
- Komiya, N., Good, G. E., & Sherrod, N. B. (2000). Emotional openness as a predictor of college students' attitudes toward seeking psychological help. *Journal of Counseling Psychology*, 47(1), 138.
- Olsson, M., Gameroff, M. J., Marcus, S. C., & Waslick, B. D. (2003). Outpatient treatment of child and adolescent depression in the United States. *Archives of General Psychiatry*, 60(12), 1236-1242. doi:10.1001/archpsyc.60.12.1236
- SAMHSA. (2015). *Behavioral Health Barometer: United States, 2014*. (HHS Publication No. SMA-15-4895). Rockville, MD: Substance Abuse and Mental Health Services Administration.
- USDHHS. (2001). *Mental health: Culture, race, and ethnicity- A supplement to mental health: A report of the surgeon general*. Rockville, MD: U.S. Department of Health and Human Services.



Nevertheless, She Persisted

Dr. Alfiee M. Breland-Noble  
[dralfiee@theaakomacenter.com](mailto:dralfiee@theaakomacenter.com)  
571-480-5478  
[dralfiee.com](http://dralfiee.com)  
[aakomaproject.org](http://aakomaproject.org)

THANK YOU!