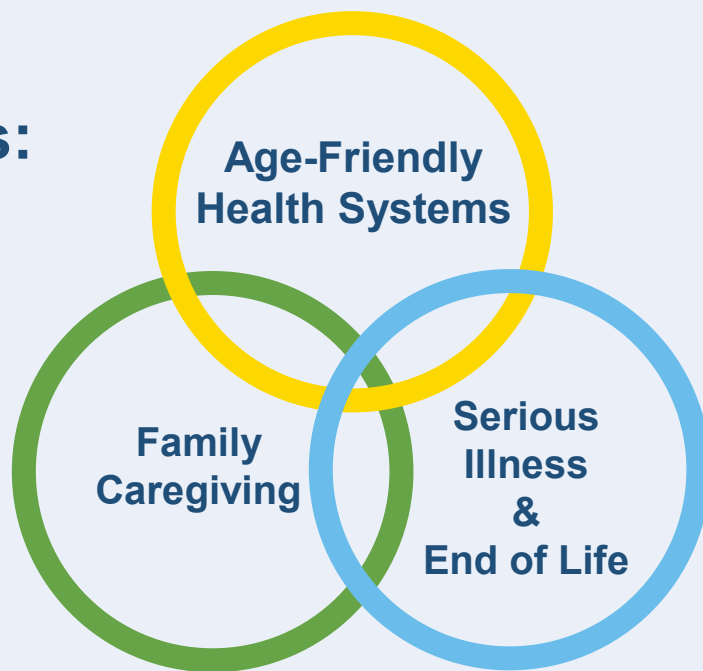


# The John A. Hartford Foundation: Mission and Priorities

Terry Fulmer, President

**Dedicated to Improving the Care of Older Adults**

## Priority Areas:



# Supporting Nursing Homes During COVID-19: *How Philanthropy can Partner with Government and the Field to Support Solutions: Convening*

## **JAHF Role as Convener:**

- Foundations, government, academics, professional/trade associations, other experts
- Rapid coalescence and information exchange
- Continuing touchpoints for improved messaging and organization



# Supporting Nursing Homes During COVID-19: *How Philanthropy can Partner with Government and the Field to Support Solutions: Immediate Action*

## **New Rapid Response Network:**

- JAHF supporting Institute for Healthcare Improvement with national NH/LTC leaders
- Daily 20-minute Nat'l Nursing Home Huddles
- Policy & data updates + clinical/operational support
- <http://www.ihf.org/Engage/Initiatives/COVID-19-Rapid-Response-Network-for-Nursing-Homes>

## **Topics:**

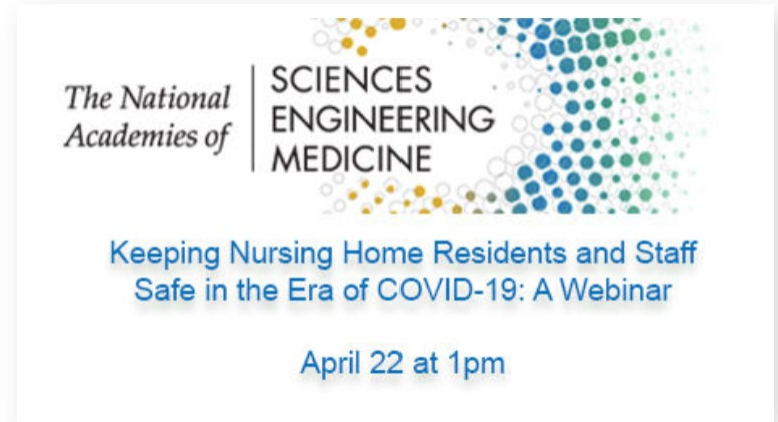
- Personal Protective Equipment (PPE)
- Testing capacity for both residents and staff
- Staff illness, attrition, and well-being
- Managing transfers to and from EDs/hospitals
- Visitation restrictions



# Supporting Nursing Homes During COVID-19: *How Philanthropy can Partner with Government and the Field to Support Solutions: Systemic Change*

## National Academies of Sciences, Engineering and Medicine Report on Nursing Home Quality & Safety:

- 18-month study to develop set of consensus findings and recommendations to ensure safety of nursing home residents and staff
- Special emphasis on public health impact of pandemics on nursing home care



# Supporting Nursing Homes During COVID-19: *Recent Policy Announcements/Reactions*

## **CMS New Independent Commission on Nursing Homes – 4/3**

- Will make recommendations to CMS on short and longer-term needs
- To include industry experts, family members, clinicians, advocates, ethicists, administration, academicians, infection control and prevention professionals, state and local authorities, other experts

## **New Nursing Homes COVID-19 Transparency Effort – 4/19**

- Requires informing residents/families of cases and deaths
- Direct reporting to CDC, as well as to state and local depts
- CDC will provide reporting tool and will make data public







Thank you!



**The John A. Hartford Foundation**  
Dedicated to Improving the Care of Older Adults

[terry.fulmer@johnahartford.org](mailto:terry.fulmer@johnahartford.org)

[www.johnahartford.org](http://www.johnahartford.org)